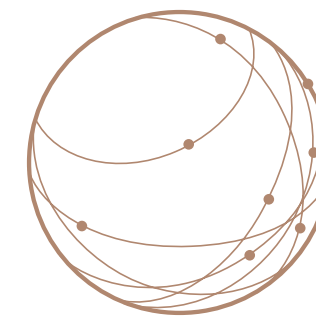


LUCERNE, TO
RONTO, BARCE
LONA, SUZHOU,
SUSSEX, YORK

Savouring the world

A journey into the art of the kitchen.

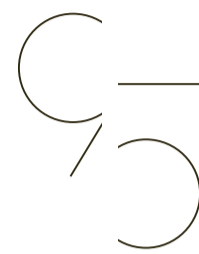
SHIRE, VIEN
NA, HAMBURG,
BIARRITZ, MU
NICH



A JOURNEY INTO
THE ART OF THE
KITCHEN.

Welcome to the ID Days 2024.

An invitation from SieMatic, premium manufacturer
of contemporary luxury and timeless elegance in
kitchen design.



SieMatic

*95 Years of
Kitchen Interior Design*
1929 – 2024

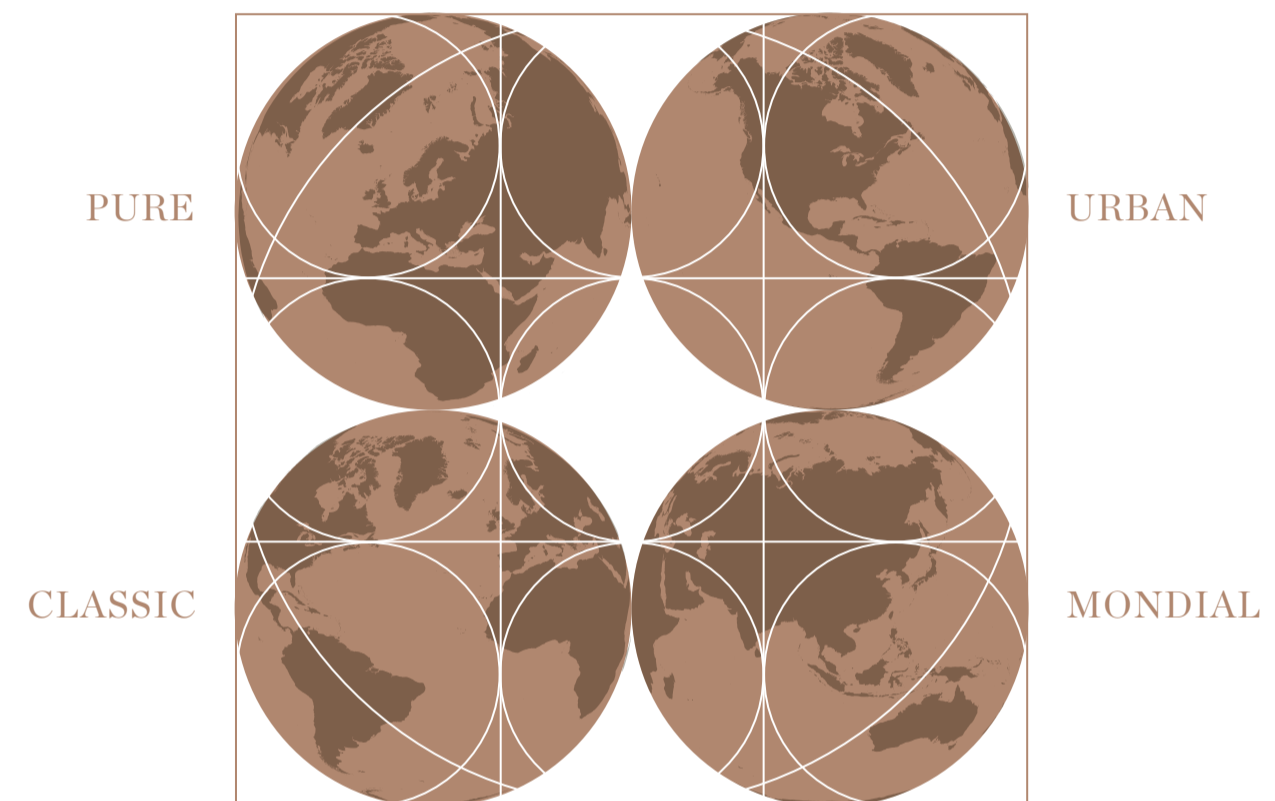
Beyond the ordinary.

VISIONARY SPACES

SieMatic is more than a brand. It is an experience. For 95 years, we have been redefining the boundaries of excellence in kitchen design, setting standards that have become the benchmark for the industry. Our creative spirit and uncompromising passion for craftsmanship continue to define the SieMatic brand to this day.

SieMatic understands the kitchen like no other. Because we see the kitchen as an integral part of the overall living area, our innovative concepts for spaces and furniture are anything but conventional. A unique design philosophy that evokes an emotional, visionary experience within a kitchen.

Custom developed in collaboration with highly skilled kitchen specialists, each SieMatic is then individually produced. Precision installed by our partners around the world, a kitchen then emerges which is as individual as your fingerprint, as distinctive as your lifestyle. In other words: the kitchen you have been waiting for.



A WORLD OF STYLE. IN FOUR STYLE WORLDS.

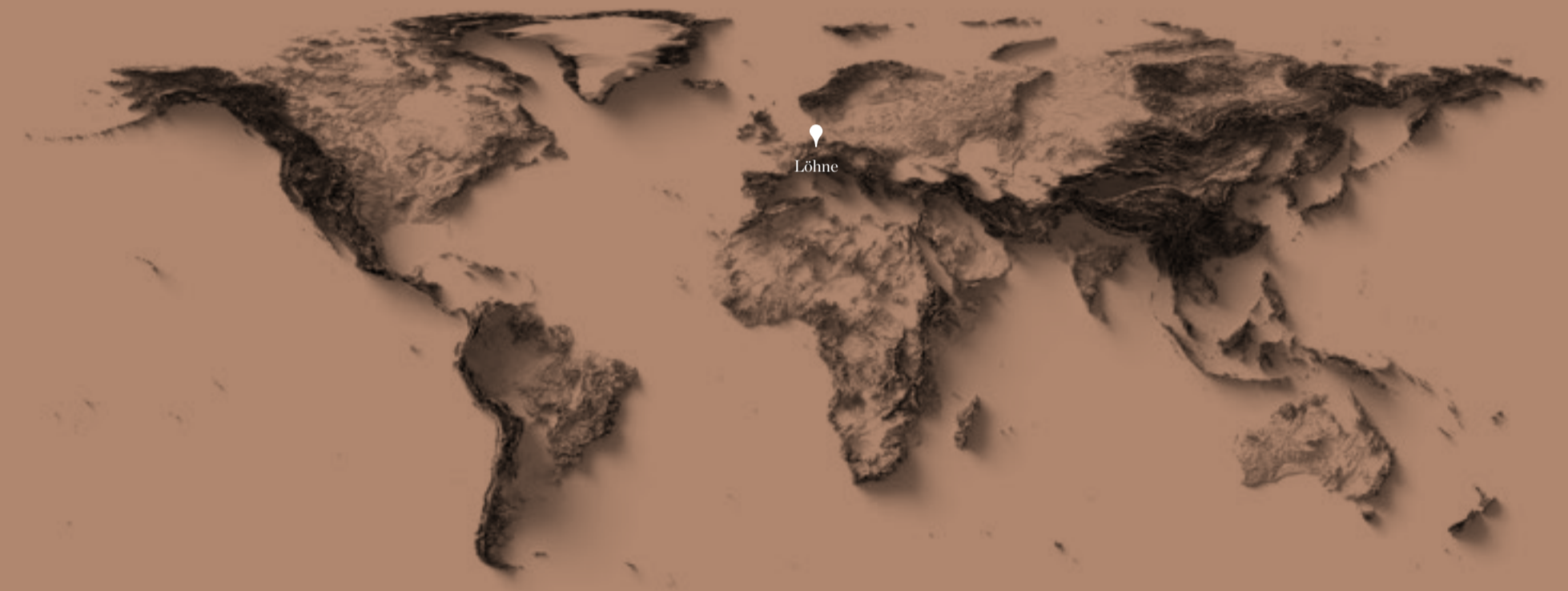
What for many people is the heart of the home has always been the heart of our company: the kitchen. Kitchens as spaces for creativity, open to friends and family, open to new encounters and fresh ideas.

Because every person is special, every character is unique, every country and every region has its own culinary culture, we think not in terms of products, but of styles. An innovative design principle that allows us to create living spaces all around the world, each perfectly reflecting the personality of its owner.

Find inspiration in our four style worlds PURE, URBAN, CLASSIC and MONDIAL. Designed in collaboration with our highly specialised consultants and manufactured in accordance with your ideas and wishes, the result will be absolutely unique: your very own, very personal, bespoke kitchen.

SieMatic

Rooted locally. Coveted globally.



WE EXPAND HORIZONS.

With a captivating blend of exceptional craftsmanship, excellent design and innovative technology, SieMatic kitchens have enjoyed growing global success and recognition.

Today, we operate in 75 countries around the globe, but remain firmly rooted in Löhne, Germany, where our company was founded nearly a century ago.

And where we continue to redefine the future of the kitchen, manufacturing every SieMatic to perfection and repeatedly reinspiring kitchen connoisseurs, designers and architects all over the world. With top-quality technology and a style-defining design that has won us not only a host of prestigious international awards, but also the hearts of luxury kitchen lovers worldwide.

As the needs and demands of our discerning customers grow, so too does SieMatic. From Rome to Montreal, from Mumbai to Shanghai, from Doha to Brussels, from Bad Homburg to Linz, SieMatic has continued to expand its presence and open new world-class stores in recent years. Today, we are able to welcome kitchen connoisseurs to over 400 showrooms and flagship stores around the world.

Join us on inspiring journeys to visit exemplary kitchen designs in Toronto, Madrid, Lucerne and Suzhou, and explore select real-life SieMatic projects in Los Angeles, West Sussex, Yorkshire, Vienna, Hamburg, Biarritz and Munich.

CONTENTS

- 02 Beyond the ordinary.
- 04 Rooted locally. Coveted globally.
- 44 Hidden talents.
- 48 SieMatic S2 next generation.
- 58 Light becomes tangible. SieMatic SLX.
- 66 Fascinating stories.
Pure inspiration.
- 80 The beauty of inner values.
- 92 The art of composition.
- 104 Visible precision.
- 106 Truly cosmopolitan.
- 110 Award-winning ideas.
Global competence.



BARCELONA
CLASSIC

MONDIAL
SUZHOU



LUCERNE
PURE



TORONTO
URBAN

8 – 43 Join us on a fascinating journey to some of the most inspiring places in the world.

Wherever
I turn, I am
surrounded by
a truly magical
world.



Adapted from Richard Wagner, 1866



Framed by its breathtaking Alpine panorama and glittering lake, Lucerne seems to have emanated directly from a dream. With true elegance, this glamorous Swiss city unites historical resplendence and contemporary flair.



Pure aesthetics: protected and guarded by the Swiss in all their thoroughness, the crystal-clear water of idyllic Lake Lucerne looks good enough to drink.

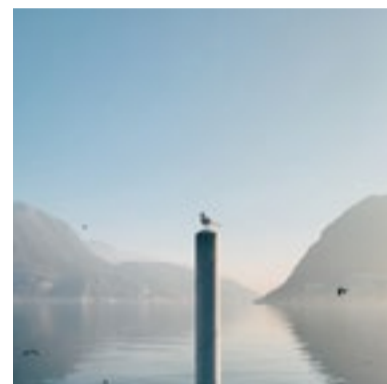
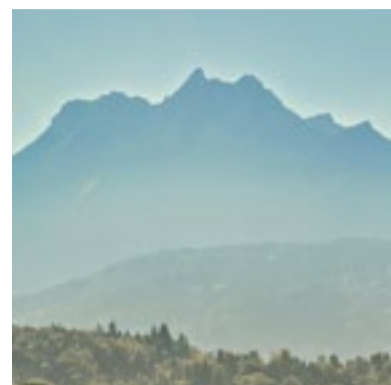
Purism to perfection.

Swiss design, known for its minimalistic elegance, became a significant force in the early 20th century. With its clear and structured approach, it challenged playful Jugendstil complexity.

Today, Swiss designers favour a unique design language based on clarity, quality and timeless elegance. Principles which repeatedly inspire lovers of design across the world to reinterpret clear lines and perfect function in ever new and innovative ways.







A retreat for reflection.



Discreetly integrated in the surrounding architecture, the timelessly elegant design of the SieMatic style collection PURE celebrates classic minimalism and the beauty of life. An oasis of peace and lightness enabling everyday stresses to be cast aside like an overcoat.

A generous use of surfaces and materials, coupled with an absence of decorative elements, creates an atmosphere of soothing harmony. An elementary simplicity which is understood all over the world.

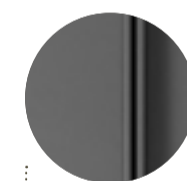
A SieMatic PURE is more than just an elegant, sculptural object. Its true luxury lies in its reduction to the essentials. Free of any superficiality, it embraces open space as an element in its own right, allowing it to breathe. In this atmosphere of soothing lightness, a refuge is created for reflection and inspiration, enabling a love of clarity and elegance, of peace and harmony, as well as a passion for timeless perfection to unfold.



Ceramic atalaia super blanco



Aluminium anodised gold bronze

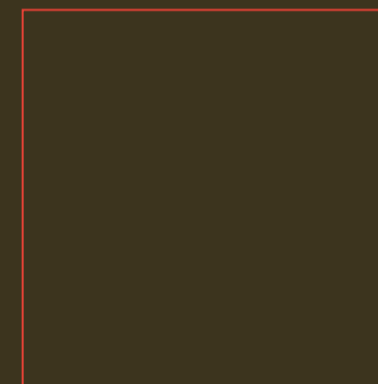
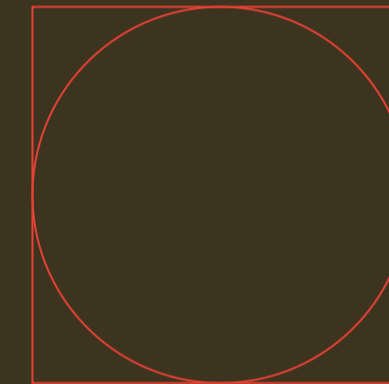


Individual ColourSystem velvet-matt



More at siematic.com/pure

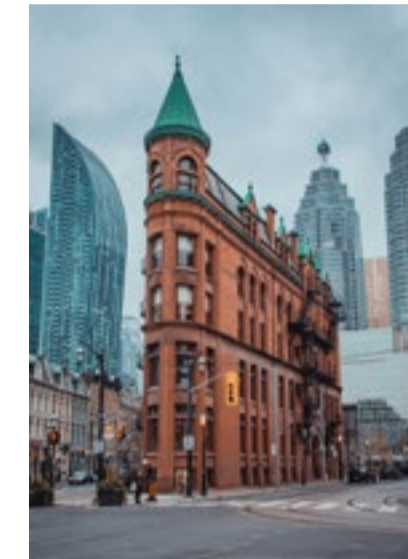
Toronto. The
lake. The glitter.
The glamour. The
enjoyment. The
elegance. The
extravagance.
The joie de vivre.



World premiere:
SieMatic
SG6



Toronto's seafont, a majestic stage rising from the banks of Lake Ontario, sparkles like an emerald set between the glinting towers of the metropolis. In the soft glow of the setting sun, the day can unwind while the city comes to life like a huge kaleidoscope illuminating the bars and restaurants.



Cosmopolitanism as lifestyle.



Inside the luxurious penthouses of the neighbouring skyscrapers, living takes on a whole new dimension. Huge windows provide breathtaking views of the glittering water and setting sun, transforming the lake into a sea of gold and purple. Here, high above the world below, life appears to stand still, transfixed in a moment of pure beauty and calm.



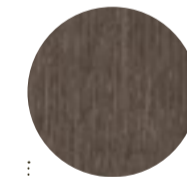


World premiere for fresh creativity. The new SieMatic SG6.

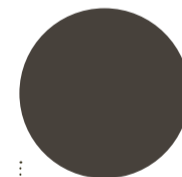
The SieMatic style collection URBAN has the flexibility of a modular, asymmetric conceptualisation and a mixture of open and closed areas, permitting an exceptional degree of design freedom. Complemented by the innovative, elegantly rounded elements of the new SieMatic SG6, this freedom is almost without limits.

A striking feature of the SieMatic SG6 is its harmonious curves, a design language taken directly from nature. Fine, straight recess channels provide an attractive contrast. Open cabinet elements integrate perfectly in the panel wall system, while closed areas replace conventional shelves.

In this fascinating interplay of novel and familiar elements, the SieMatic SG6 intersperses the the URBAN style collection with delightful new accents and facilitates original, unconventional and solitary designs.



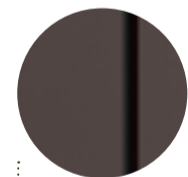
Veneer oak hazel brown



Graphite grey velvet-matt



Granite nero marinace satin finish



Recess channel black velvet-matt



More at siematic.com/urban



A CANADIAN CLASSIC WITH A NEW TWIST.

Since its invention in 1969, the delicious Water Caesar has advanced to become the national cocktail of Canada. A perfectly mixed Water Caesar is far from conventional, however. It is a culinary adventure, a sweet and sour masterpiece.

If you are looking for something a bit different, try this fresh and fruity variant of the well-known classic for yourself.



Watermelon juice

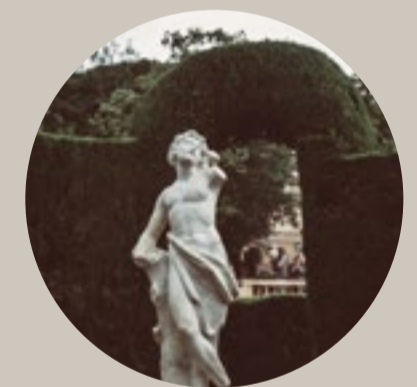
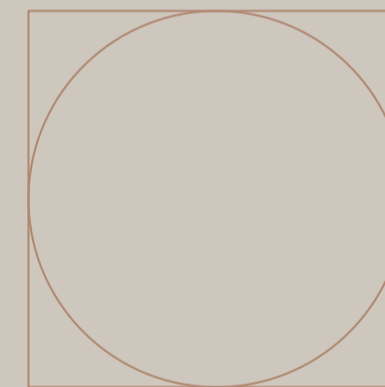
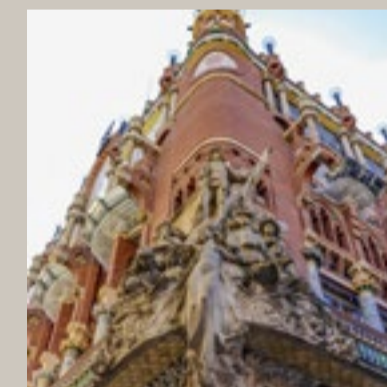
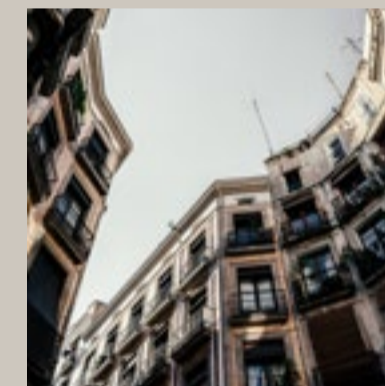
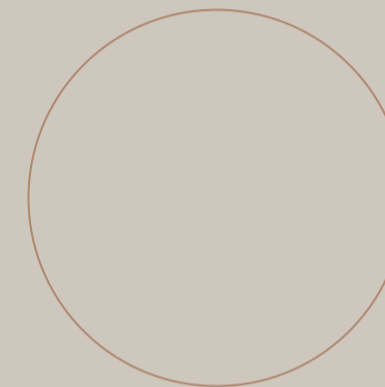


Tomato juice

- 45 ml vodka
- 35 ml organic tomato juice
- 35 ml watermelon juice,
freshly pressed
- 20 ml aged sweet vermouth
- 10 ml lemon juice
- 5 ml mustard vinegar
- 2 dashes Tabasco
- Ice cubes

Mix all ingredients and garnish with a slice of lemon or watermelon.

Barcelona
is not a city.
Barcelona
is a feeling.





Barcelona shines like a kaleidoscope of art and culture, emotion and vitality, colours, sounds, fragrances. Where beaches are golden ribbons tying the pulsating metropolis to the embrace of the Mediterranean.

Where Gaudi's architectural masterpieces soar into the azure sky like the structures of dreams. Where contemporary art galleries are found right next to cathedrals which are hundreds of years old. And where traditional Catalan cuisine meets avant-garde gastronomy.

The art of combining traditional and modern.



AN ODE TO ARCHITECTURE.

Example, the beating heart of Barcelona, is a true masterpiece of urban elegance and visionary planning. A pulsating, lively quarter with an energy and joie de vivre which are the very essence of Barcelona.

CLASSIC MEETS
AVANT-GARDE. AT
THE VERY HEART.

Classic Spanish architecture is always also a homage to its history. A design ethos which pours the warm, rustic charm of this rich culture into elegant new layouts, resulting in an exceptionally impressive style.

This connection between classic and avant-garde opens up emotional spaces which celebrate the past while making bold statements in the present.





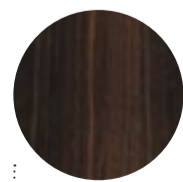
What links lovers of classic design all over the world is their enthusiasm for authentic craft, true values and timeless elegance.

The SieMatic CLASSIC is an accomplished mix of traditional and contemporary style elements, uniting familiar ornamental shapes with clear surfaces. It skilfully combines sophisticated matt or glossy colours with metal, glass and stone, complementing linear symmetrical or even asymmetrical architecture with decorative accents.

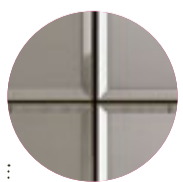
Classic, in a new composition. A CLASSIC kitchen can be glamorous or minimalist, opulent or unobtrusive, traditional or avant-garde. And as individual as never before.



Aluminium velvet-matt with bevel



Veneer smoked oak with veneer processing



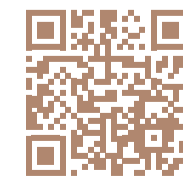
Faceted frame nickel-coloured glossy / brushed



SQ lacquer pebble grey glossy

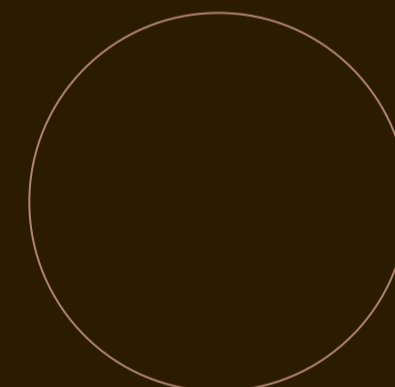
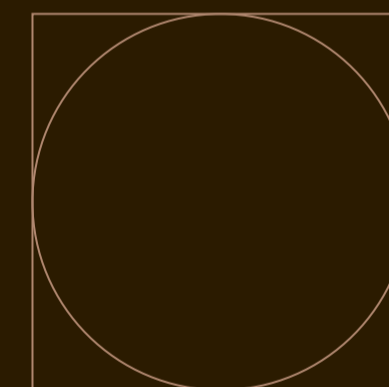
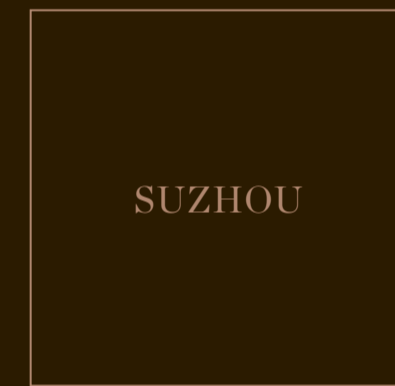
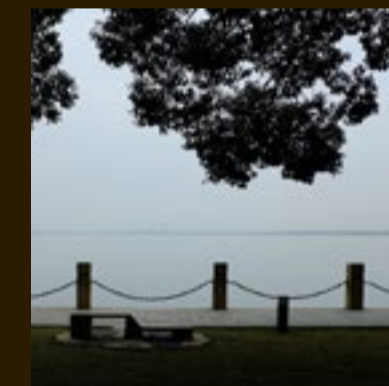
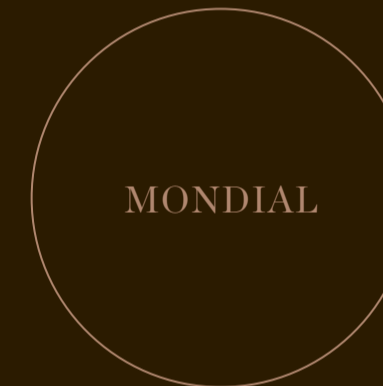
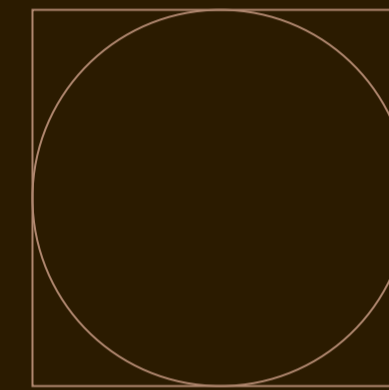


Natural stone arabescato corchia polished



More at siematic.com/classic

In the gentle
glow of the
gardens, a
profound truth
is concealed.





A GATE BETWEEN HEAVEN AND EARTH.

In a bold contrast to the old gardens and quiet canals of the city, the Gate to the East rises over the skyline of Suzhou as a symbolic bridge between the traditional and the modern.

Futuristic, impressive and slightly crazy, this monument is reminiscent of a traditional Chinese gate and yet embodies the dynamic energy of a Chinese metropolis which is continually reinventing itself without forgetting its origins.



Masterpieces of traditional and pioneering aesthetics.



FINDING ART IN THE EVERYDAY.

Around two hundred carefully laid out gardens within the city walls of Suzhou are much more than just conventional green spaces. Nine of them have been declared UNESCO world heritage sites and are home to particularly impressive classic Chinese artistry. Their overwhelming splendour is enchanting, down to the very last detail.



These gardens are hundreds of years old, and their beauty is preserved in the poetry of the past, in every stone and every plant. Visitors find themselves in a world of peace and harmony, full of magical spots in which to lose themselves. And then find themselves again.





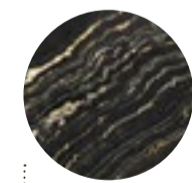
AN EMOTIONAL
WORLD UNITING
OPULENCE AND
SIMPLICITY.

With its visionary design language, the luxurious SieMatic MONDIAL combines the simplicity of geometric shapes with the opulence of expressive materials to form an experience for the senses.



Material, expressively presented. Sophisticated natural stones have seldom been as expressively showcased within the architecture of a kitchen. Worked with the greatest precision from dramatically marbled quartzite, this seemingly solid monoblock radiates a unique elegance and sublimity.

This fascinating interplay of material, shape and colour lends the SieMatic MONDIAL an astonishing presence, while at the same time allowing it to melt harmoniously into the surrounding architecture. Design, perfected.



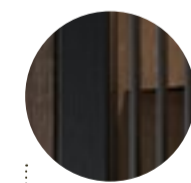
Quartzite tropical storm sanded



Veneer oak nutmeg flamed



Granite nero assoluto sanded



Aluminium anodised matt black brushed



Mehr unter [siematic.com/mondial](https://www.siematic.com/mondial)



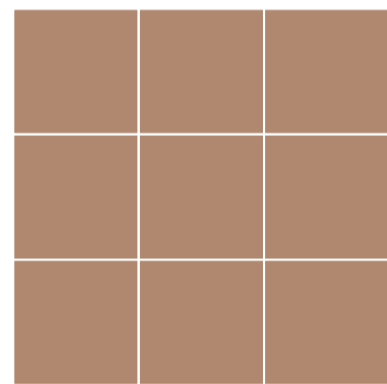
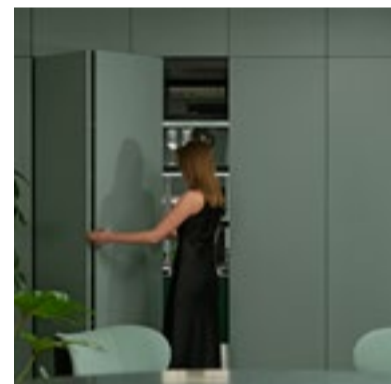
INVISIBILITY AS
THE PERFECT
SYMBIOSIS OF
PRESENCE AND
PURISM.

Contemporary kitchens are becoming increasingly invisible within open-plan spaces due to the clever concealment of appliances, bars and functional areas behind sliding doors. This opens up completely new possibilities for elegant, purist kitchen design, with a SieMatic kitchen still firmly in the focus, but without its functionality being permanently on show.

The exceptionally wide range of one, two and four-panel side-sliding doors provides countless opportunities to create and conceal individually designed areas. When closed, nothing can disturb the formal serenity of the SieMatic kitchen design, preserving its puristic and timeless presence.

Not all
innovations are
immediately
obvious.

When visible, they redefine the space.

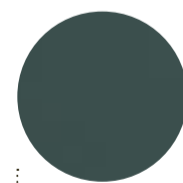


OPEN TO THE UNEXPECTED.

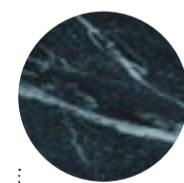
With the increasing desire for invisible appliances, the concealed kitchen is becoming a new status symbol. Gliding along perfectly smooth tracks, our sliding doors offer almost infinite design possibilities: from hiding the kitchen units in a small apartment or the appliances in an open-plan kitchen, to concealing a luxurious wine bar in a spacious loft, to creating access to a wet kitchen or pantry or utility room.

Just what is hidden behind the doors is individually plannable and bespoke to your kitchen.

Optional lighting is activated when the doors are opened, and appliances are switched off when the doors are closed. This not only provides perfect lighting, but also sheds light on what was previously in the dark. And an appliance which is running cannot be forgotten. A fascinating interplay celebrating perfect design and precise functionality.



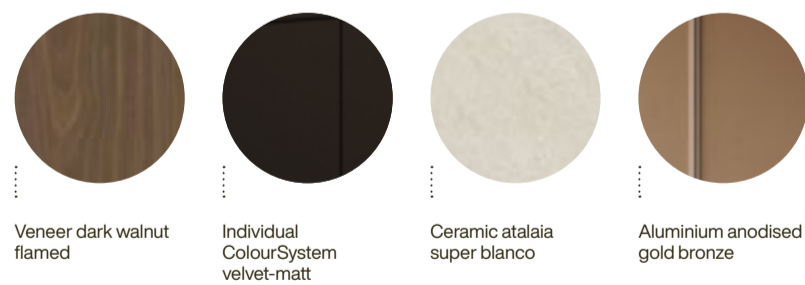
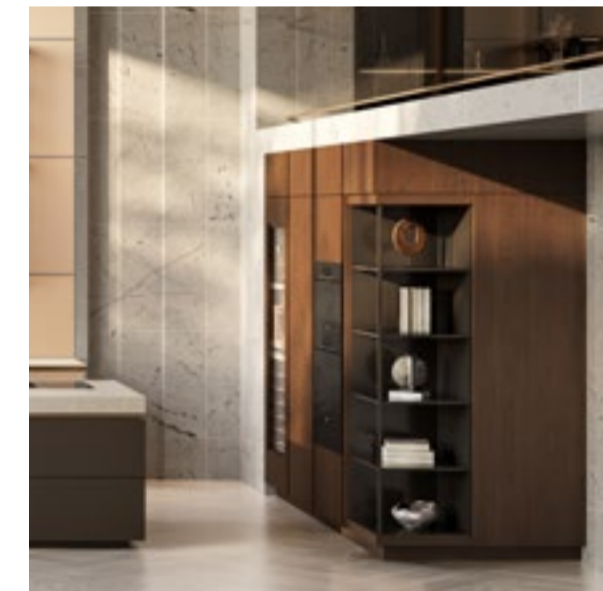
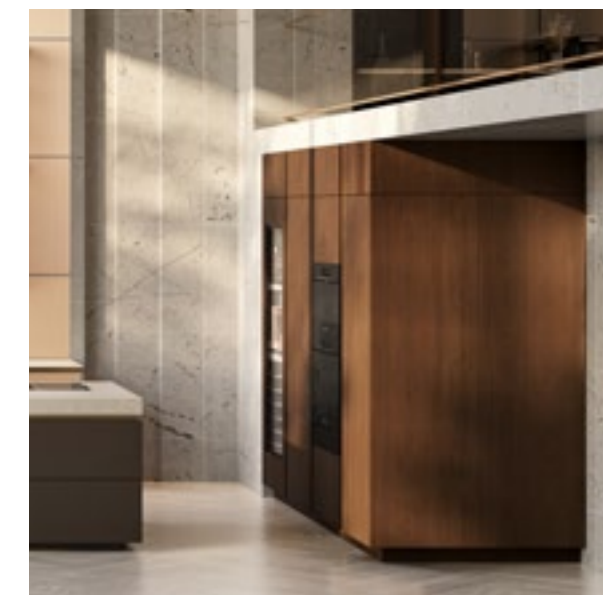
SQ lacquer caviar
green velvet-matt



Natural quartzite
tauern green satin
finish



A new icon
of elegant
aestheticism
and perfect
functionality.



Veneer dark walnut flamed

Individual ColourSystem velvet-matt

Ceramic atalaia super blanco

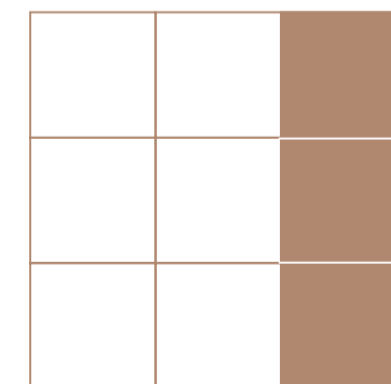
Aluminium anodised gold bronze

THE NEW SIEMATIC S2 AS A UNIQUE TACTILE AND VISUAL EXPERIENCE.


The aesthetic principle of hidden functionality: nothing gives away the secret behind the elegantly designed corner of the new SieMatic S2. In the blink of an eye, an elegant twist transforms a kitchen cabinet into a sophisticated shelf that cleverly links the kitchen and living areas.

The unassuming corner of the tall cabinet in elegant walnut veneer conceals a SecretSpace. With one translatory rotation, this technical masterpiece turns into a shelf unit and reveals its contents. A gentle push is sufficient to set the cabinet in motion and rotate it by 180°.

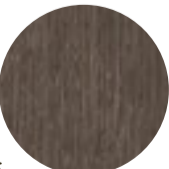
Precision mechanics ensure extremely smooth operation, while special stoppers cushion the movement. Even the lightest of objects remain standing.





- 

Aluminium titanium
silk matt
- 

Recess channel
black velvet-matt
- 

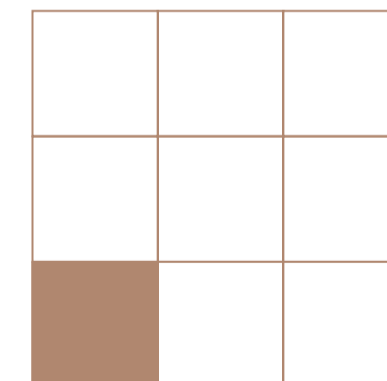
Veneer hazel brown
oak
- 

Veneer back panel
tarsie
- 

Ceramic
storm gris



**A REVOLUTIONARY
COMBINATION OF
TECHNOLOGY AND
AESTHETICS.**



SieMatic SecretSpace is available for base and tall cabinets. With the precision of a classic Swiss clockwork, the translational rotation completely transforms the look of every kitchen. When the elegant doors are opened, the shelves become a showcase for the objects stored within, providing a visual and tactile experience.



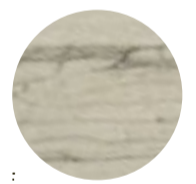
NOW YOU SEE IT.



NOW YOU DON'T.



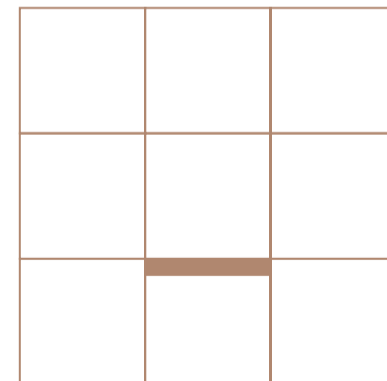
Veneer graphite oak



Natural stone macaubas giotto patinato



SieMatic SecretService is a flat and ingenious drawer concealed almost invisibly within a fine recess channel. It is a prime example of perfection in appearance and function. Nothing detracts from the clear lines, perfect angles and elegant presence of a handle-free SieMatic S2. Only those who are in on the secret can open the hidden drawer with a gentle push: puristic aesthetics in its purest form.



More at siematic.com/s2

Light becomes
tangible. Design
becomes art.



In a sculpture of
light and space.

The SieMatic
SLX.



With the SLX, SieMatic has developed a unique design language for puristic ambience and discreet luxury. Through its special lighting concept and timeless appearance, this style icon elevates exceptional architecture to an art form.



HOMAGE TO A DESIGN PHILOSOPHY.

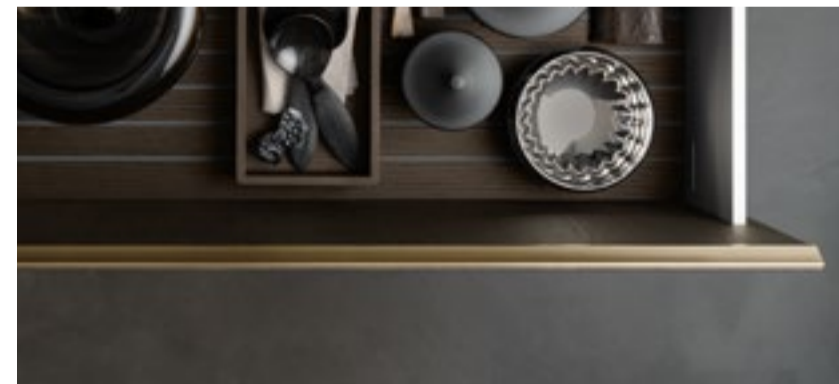
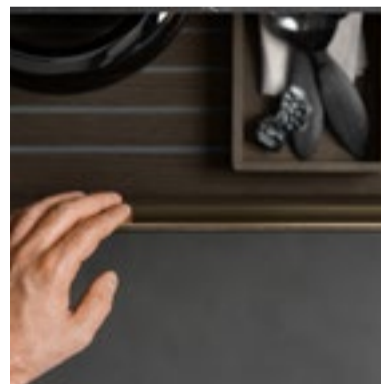
The major and sustained success of the SieMatic SLX is due not least to its immense variability.

With its clear lines and rich abundance of variants, materials and colours, the SLX meets every architectural challenge head on, confidently assuming its role as the focal point of the living space.



DESIGN DEFIES GRAVITY.

A very special expression of the transparent lightness of the SieMatic SLX design is the way in which the glass shelves and pull-outs mounted at the rear of its luxurious glass cabinets appear to hover. Kitchen and living areas melt seamlessly into one.





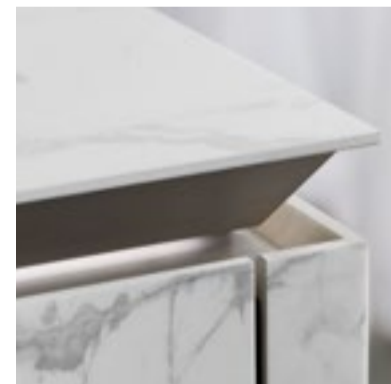
LIGHT AND LINES BECOME ONE.

Light and lines enter into a unique symbiosis in the SieMatic SLX. Light strips integrated discreetly in the shadow gaps of the recess channels can change their temperature and brightness to suit the time of day and the mood, directly influencing the atmosphere within the space.



LIGHT YOU CAN TOUCH.

The SieMatic SLX in Ceramic has an impressively elegant presence with ostensible marbling. The focus is a perfectly created, back-lit recess channel which, in conjunction with its delicate proportions of just 6.5 millimetres, significantly defines this forceful design.

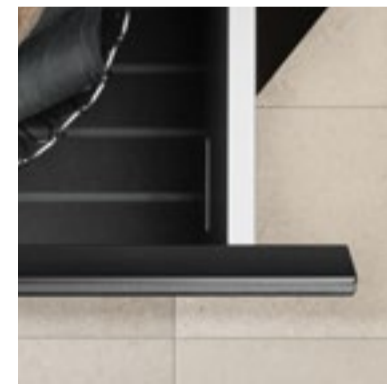


A DESIGN CONCEPT WHICH RAISES THE BAR.

Thanks to the joy of the individual creation process, every SieMatic SLX will be experienced as unique. The interior and kitchen designs result from a wealth of potential materials, surfaces and colours.



Whether coordinated shades or contrasting accents; elegant veneers, striking metals or discreet to expressive ceramics; velvet-matt or high-gloss lacquer in over 2,000 special colours; delicate or solid: behind every composition there is a coherent overall concept.



WINNER OF INTERNATIONAL AWARDS.

Since its original launch, the SieMatic SLX has remained an international success story, convincing design juries, architects and end customers in equal measure.



With its iconic style, the SieMatic SLX has to date won no less than five prestigious design prizes: the ICONIC AWARD 2020 Innovative Interior "Best of the Best"; the iF Design Award 2020, the Red Dot Design Award 2020; the German Design Award 2021; and especially pleasing to the SieMatic designers and engineers, following the challenging development of an SLX in ceramic, the German Design Award 2022.



More at siematic.com/slx

SieMatic

Fascinating stories. Pure inspiration.

www.siematic.com/stories

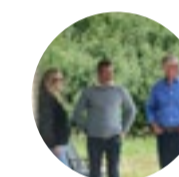


EVERY HOME IS UNIQUE

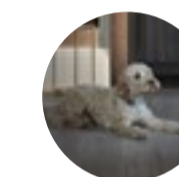
Our home stories take you on a journey into the real lives of extraordinary personalities, into contemporary kitchen designs and refreshing new home concepts. Let them inspire you.



LOS ANGELES
USA



WEST SUSSEX
ENGLAND



YORKSHIRE
ENGLAND



VIENNA
AUSTRIA



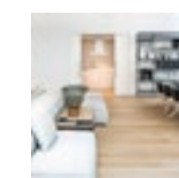
HAMBURG
GERMANY



BIARRITZ
FRANCE



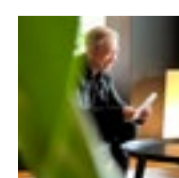
MUNICH
GERMANY



MADRID
SPAIN



DUBLIN
IRELAND



KOMAZAWA
JAPAN

EMBARK ON A VOYAGE OF DISCOVERY:

On our website, you will find examples of SieMatic kitchens from around the globe. Unique designs created to meet the needs and wishes of extraordinary personalities, from an international film star to a passionate chef.



More at siematic.com/stories



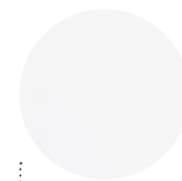
**WEST SUSSEX,
ENGLAND: A
SANCTUARY IN
THE WILDERNESS.**

It is hard to tear your eyes away from this striking sight in the middle of such a broad landscape. For Tim and Jane, their new house is a dream come true. A tranquil, Zen-like courtyard is surrounded by a series of glazed rooms, each with a spectacular view of the extensive gardens, natural swimming pond and green spaces created by copious trees.

The clear aesthetics and perfect craftsmanship of this domicile inspired by modernism and featuring select natural materials are reflected in the equally impressive SieMatic kitchen. The soft straight lines of the kitchen design, with its light woods and black accents, blend seamlessly into the overall architecture and design language of the building. The generously proportioned kitchen with its two parallel islands perfectly accommodates Jane and Tim's lifestyle and their love of cooking together for themselves and their guests.



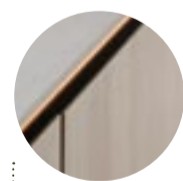
Oak alba
vertical matt



Lotus white
velvet-matt



Ceramic
savioia perla

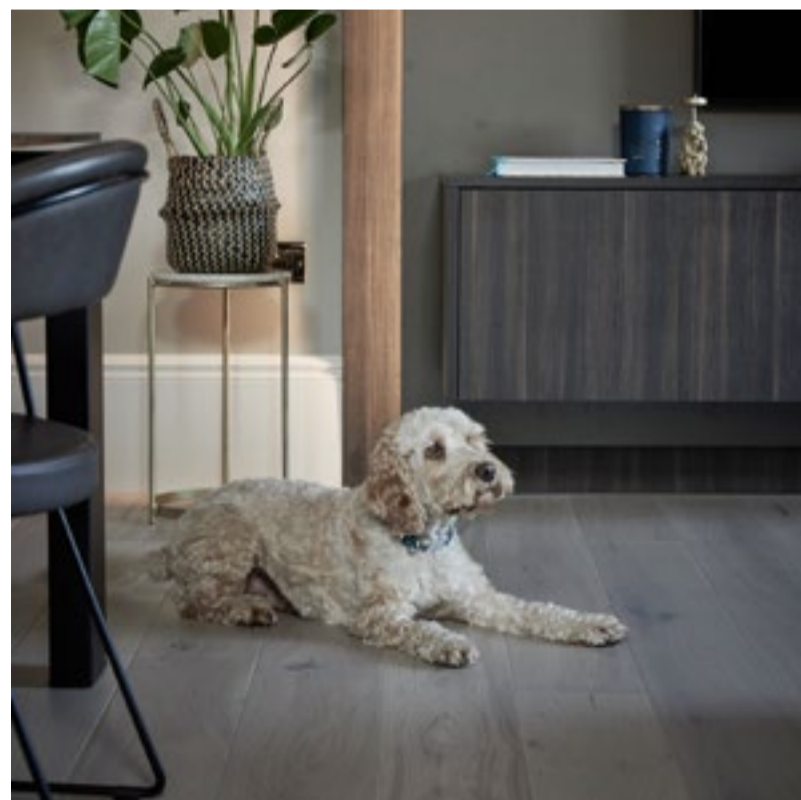


SLX recess channel,
black matt

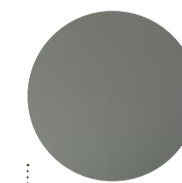


**YORKSHIRE,
ENGLAND: A RETREAT
FOR MULTIPLE
GENERATIONS.**

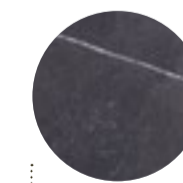
Open-plan, generously proportioned and timelessly elegant: the stylish kitchen in picturesquely located Greenhill House was designed for a lively family with a passion for baking together, cooking together and enjoying each other's company. The result of the intensive planning phase was a perfect combination of functionality and concentrated working space, as well as a calm oasis of relaxation and retreat.



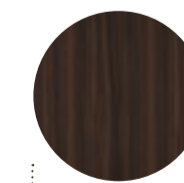
The central element is a striking kitchen island more than four metres long and offering ample space for cooking and working, as well as an unrestricted view of the living and dining areas. The high-quality materials and discreetly integrated bar with antique bronzed mirrors and glass shelves lend the kitchen a subdued elegance, while the mirror is positioned in such a way as to afford a view of the rolling hills outside, corresponding harmoniously with the warm, subtly grained natural wood of the kitchen fronts.



Stone grey
velvet-matt



Ceramic
storm negro



Walnut perigord
vertical matt

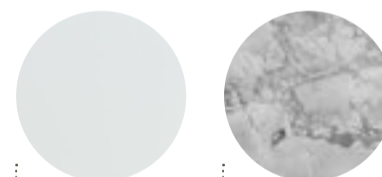
VIENNA, AUSTRIA:
RAISE THE
CURTAIN FOR
URBAN LIVING!



Emily had a bespoke SieMatic kitchen fitted into the somewhat complicated layout of her charming period flat in Vienna. Her kitchen perfectly combines functionality and aesthetics, while also radiating a feeling of lightness and ease.

A stylish refuge and relaxing counterpoint to the bustling nearby Naschmarkt with its colourful stands where Emily likes to buy her chosen healthy foodstuffs.

Actress and cosmopolitan Emily Cox, born in Vienna and raised in a family of artists, achieved international fame with her role in "The Last Kingdom". Today, she can pick and choose between projects, as is demonstrated by the many different stops she has made in theatre, cinema and television during her acting career. In order to keep on top of her exhausting workload, the internationally sought after actress endeavours to maintain a healthy work-life balance and a conscious lifestyle.



Lotus white
velvet-matt

Quartzite white
fantasy satin finish

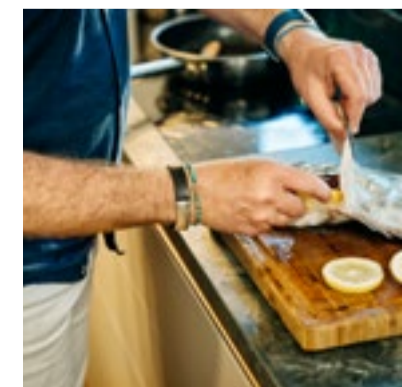




**HAMBURG,
GERMANY:
A TASTE OF
THE NORTH.**

It was love at first sight when Arndt Brockmann and his wife set eyes on the classic red Hamburg brick domicile so full of character and with an extensive garden forming what looked like a green island at the confluence of two idyllic canals. During that first visit, Arndt already began to develop specific ideas about fitting his ideal kitchen into the limited space available.

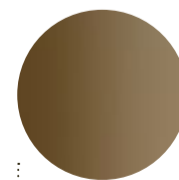
Following an intensive phase of planning and renovation work, a high-quality, timeless and elegant SieMatic kitchen is now seamlessly integrated in the dining area, forming the vibrant centrepiece of the house. A spacious workspace combined with professional functionality allows for ambitious cooking, individually or, particularly important to Arndt Brockmann, with good friends.



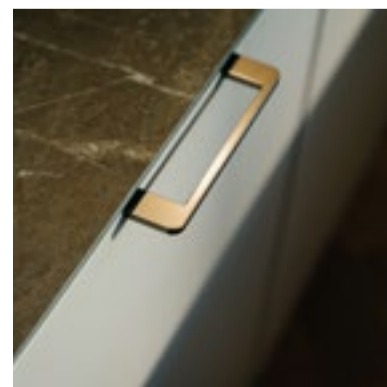
Agate grey
velvet-matt

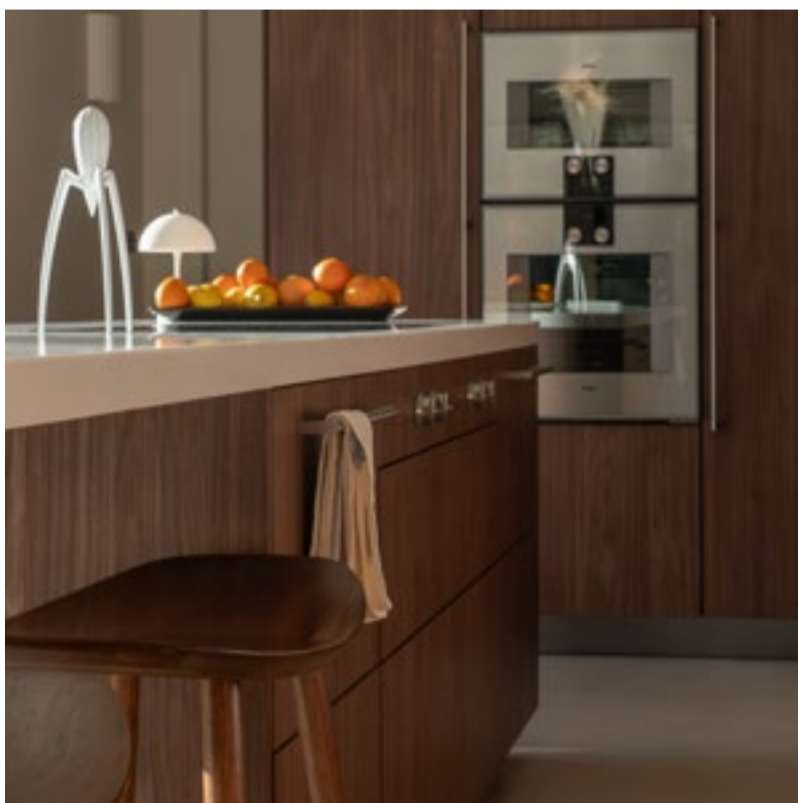


Ceramic
amazonico slate



Handle gold bronze
silky gloss





**BIARRITZ,
FRANCE:
THE VITAL
CONNECTION
BETWEEN HEAD
AND HEART.**

This family is indefatigable, always on the move. And the flow of movements within their house was planned accordingly, centering around an open-plan kitchen. Whether entrance hall or patio, living or dining room, all areas can be accessed easily from the spacious kitchen. Everything centres around this room where the family spends almost all of its time together - where they cook and play, where the three children do their homework, where guests are welcomed.

When selecting the materials for the kitchen, functionality and design were of equal importance. For the countertops, the house owners opted for a combination of almost seamless stainless steel and composite stone.

As practical as they are easy to care for, these high-quality materials feature an impressive aesthetic all of their own. Their elegant look is complemented by kitchen fronts in dark walnut reproduction, a robust material which integrates harmoniously in its natural surroundings.



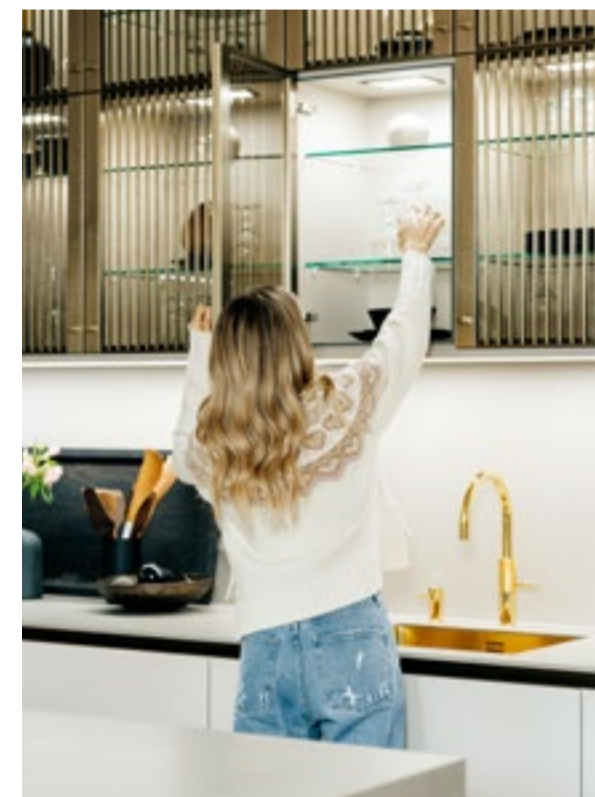
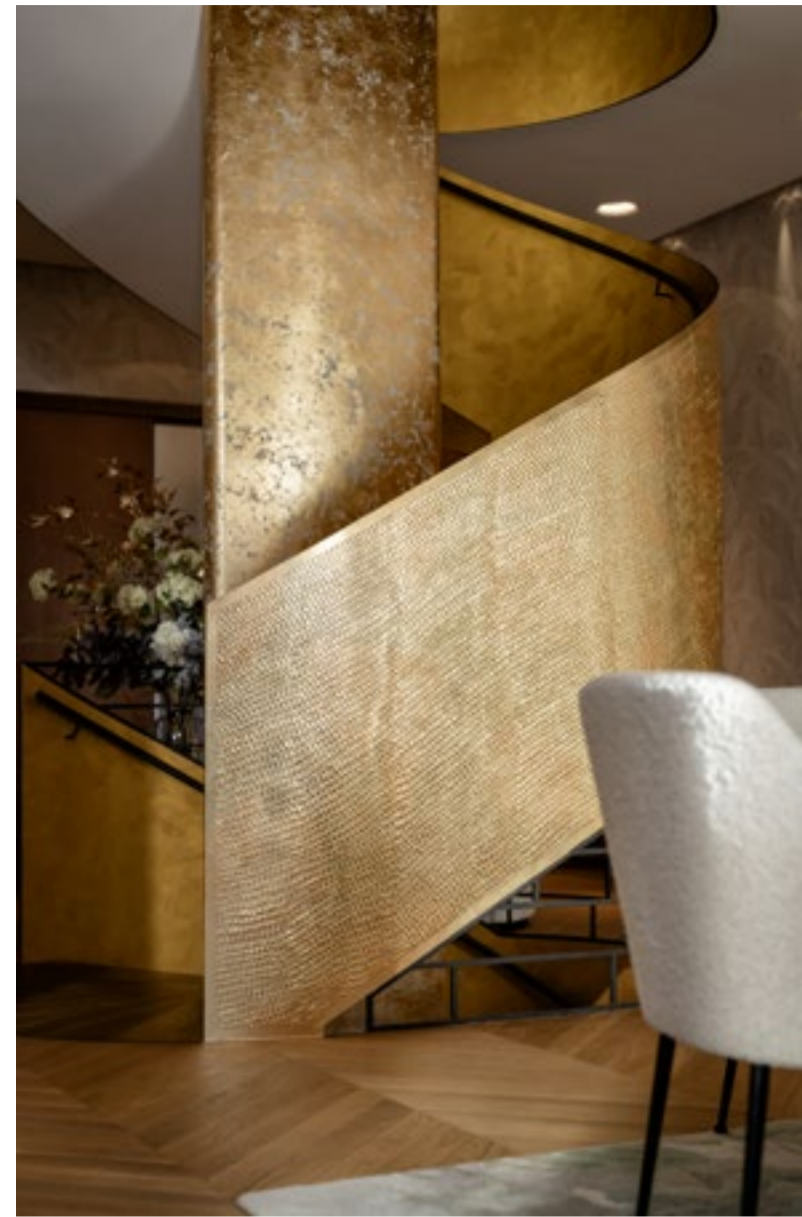
Lincoln walnut vertical



Brushed stainless steel



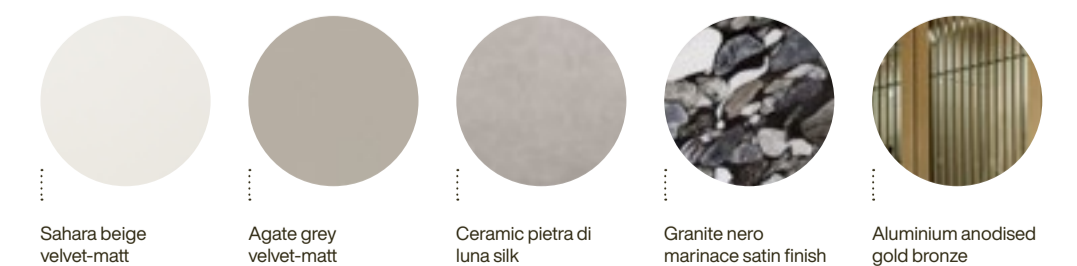
Composite stone supreme white gloss



MUNICH, GERMANY: THE ELEGANT SIDE OF EXTRAVAGANCE.

In the direct vicinity of the "English Garden" park, a successful TV presenter, author and businesswoman has created a new home centred around a bespoke SieMatic kitchen. With its timeless design and purposely contrasting accents, such as an ingenious use of colour and an inviting round table topped with Nero Marinace natural stone, this kitchen concept is perfectly in tune with the wishes and ideas of its stylish owner.

For the single mother and co-author of a cookery book, it was clear from the beginning of the conceptual phase that the aesthetic appeal of this kitchen had to go hand in hand with a high level of functionality. Well conceived solutions, such as a cleverly concealed coffee bar, a discreetly integrated teppanyaki hob, and appliances hidden behind sliding doors, all ensure that the kitchen can morph from a scene of culinary industriousness to a relaxed living area and back again.



Sahara beige velvet-matt

Agate grey velvet-matt

Ceramic pietra di luna silk

Granite nero marinace satin finish

Aluminium anodised gold bronze



The beauty of inner values.

PERFECT AESTHETICS. PERFECT FUNCTION.

Behind its elegant surfaces, the prized quintessence of a SieMatic awaits: individually plannable and configurable, multiple award-winning, exclusive interior fitting systems from SieMatic. In perfect harmony with the exteriors of the kitchen, they enable the storage space inside the cabinets, on the backs of doors, in the drawers and pull-outs, to be efficiently exploited.

The highly versatile MultiMatic elements and accessories provide order, while leaving you all the freedom you require. They open up a wealth of possibilities for you to explore and change the inner values of a SieMatic kitchen in accordance with your needs.



More at
siematic.com/interior



The patented SieMatic Multi-Function Tracking system exploits the space available inside the cabinets and on the backs of doors so cleverly that up to 30% more storage can be used efficiently.

This highly flexible system is unique in its functionality and permits the interior fittings to be changed easily and at will. Nothing could be more individual.

Ingenious, simple.

Arranged as a fine 16 mm grid, SieMatic Multi-Function Tracking is incorporated inside every SieMatic cabinet element, and is also optionally available for doors.

The SieMatic shelf and accessory clips are fixed in place quickly and easily with a 90° turn.

The beautifully designed aluminium trays and frames can be flexibly and easily hooked into the SieMatic Multi-Function Tracking system without visible fixing elements.

And equipped with the countless MultiMatic system elements in light oak and smoked chestnut so individually and so functionally that an ideal place can be found for everything.

Clear order for creative chaos.

With the MultiMatic system elements for doors and cupboards, your kitchen cabinets become well structured functional areas, keeping at the ready everything you need regularly, for example when cooking or preparing breakfast.

Open shelves mean that storage capacity can be ideally used, with space for objects of different heights.

Inserts and fixtures are available in different widths and depths, enabling bottles and jars to remain upright even when stored on the backs of doors.

Ideal for heavy objects: extremely robust internal pull-outs and drawers for tall and base cabinets help to exploit storage space to the full.

Small and delicate items are optimally stored in individually configurable trays on smoked chestnut or light oak.



More space for creativity.

A SYSTEMATIC APPROACH TO AESTHETICS.

The SieMatic interior design systems for drawers and pull-outs are as attractive as they are intelligent. As stylish as they are top-quality, and, most particularly, as attentive to detail. This highly versatile system has exemplary functionality and can easily be configured and reconfigured at will.

The flocked underside prevents any items placed on the flock mat from sliding around. Worked precisely and down to the very last detail, unique combinations of materials such as high-quality aluminium, elegant woods or low-maintenance synthetics become an aesthetic joy.





SCOPE FOR
SUCCESSFUL
DESIGN.

The three SieMatic interior design systems for drawers and pull-outs in light oak, aluminium with smoked chestnut or light oak, and white or dark grey synthetic develop their very own design languages from their materiality.

With innovative functionality, skilfully combined material combinations and precise working to the very last detail, the aluminium interior accessory system facilitates completely individual solutions.

Configuration is flexible, and the functional elements of the drawers and pull-outs can be individually selected. They are held firmly in place by the special Flock2Block principle and can be reconfigured at any time.

The SieMatic GripDeck with its rubber strips prevents even heavy objects from sliding around. And a unique carry-out catch developed especially by SieMatic ensures that, when the front is pulled out, the interior is automatically pulled out as well.



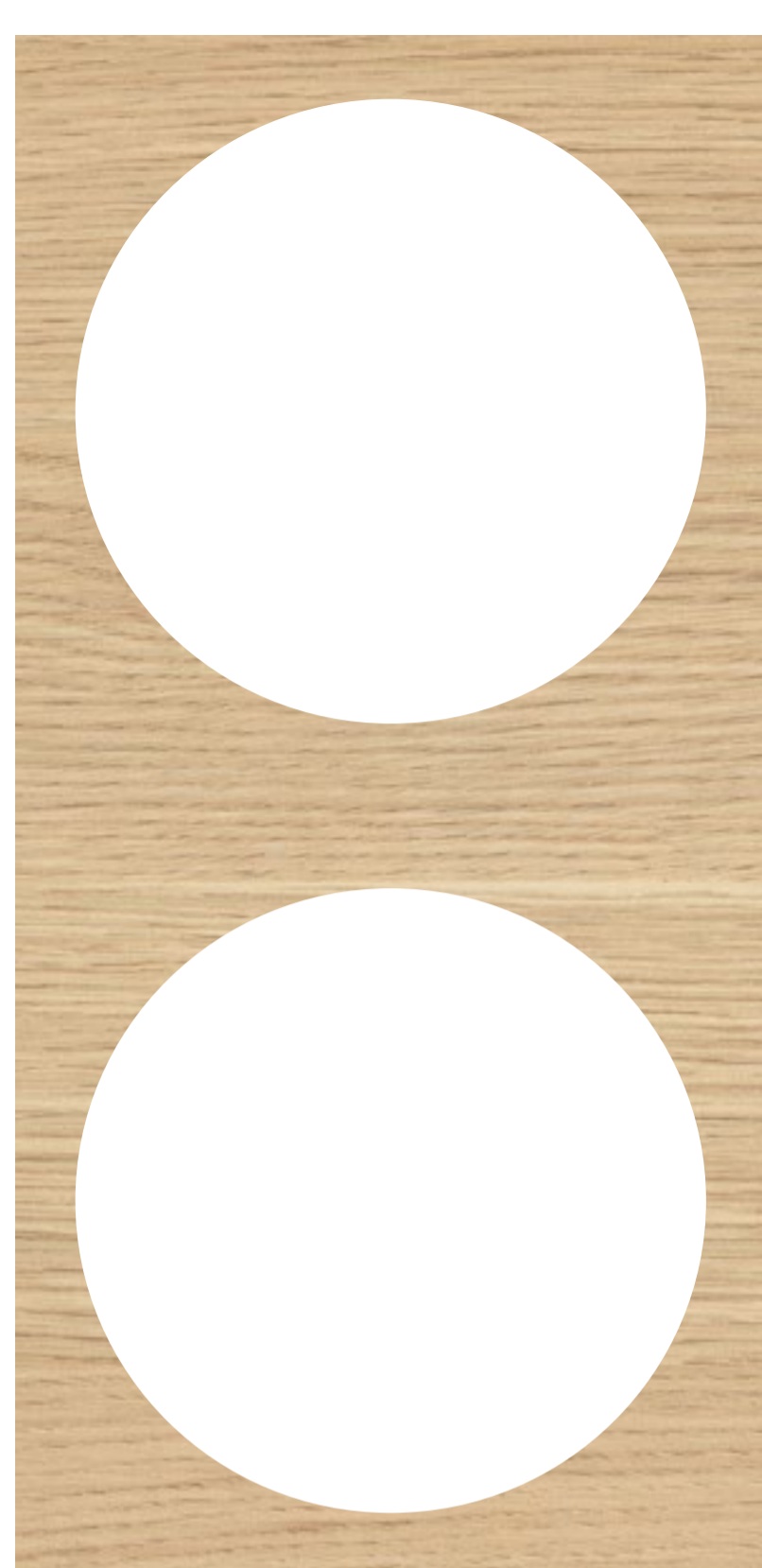
Preserving flavour was never easier.



STACKS OF GOOD IDEAS.

From beautiful wooden boxes to elegant spice mills and jars to crafted porcelain storage jars, SieMatic kitchen accessories are stylish focal points.

The porcelain lids of the decorative porcelain jars and wooden boxes can be labelled using a pencil, and are also stackable for optimal use of space. Their design is so stylish that they can even be used as elegant serving options for fingerfood.



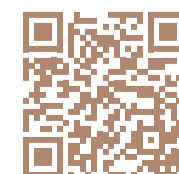


MATERIALS

The art of composition.

Material, shape and colour as an aesthetic experience.

Natural wood meets industrial stainless steel, aluminium meets ceramic, natural stone meets lacquer, pastel colours play with primary colours. New contrasting combinations show courage and celebrate a break with tradition. Use of select and perfectly finished materials gives every SieMatic kitchen the power to impress.



More at
siematic.com/materials

NATURAL WOOD

A thirst for nature and authenticity. Quenched. Sustainably.

Using elegant woods, we create exclusive kitchens of lasting beauty.

NATURAL WOOD



The textures which grow in natural wood are unique works of art. Each grain tells its own unique story. We use the highest level of craftsmanship to ensure that our hand-selected woods retain the grain, texture and character of the original, naturally grown material. The result is always unique. Each kitchen is unmistakably unique.

METAL



Whether hot-rolled or anodised; polished and shiny, velvet-matt or brushed; or with skilfully contrasting shiny and matt surfaces: genuine metal lends every space a very special lustre. With this fascinating interplay of light and shade, the kitchen is always changing. Gently, unobtrusively.

METAL

A dazzling,
shimmering
reflection of
timeless beauty.

The sophisticated radiance of metal lends every space
a hint of luxury and sophistication.

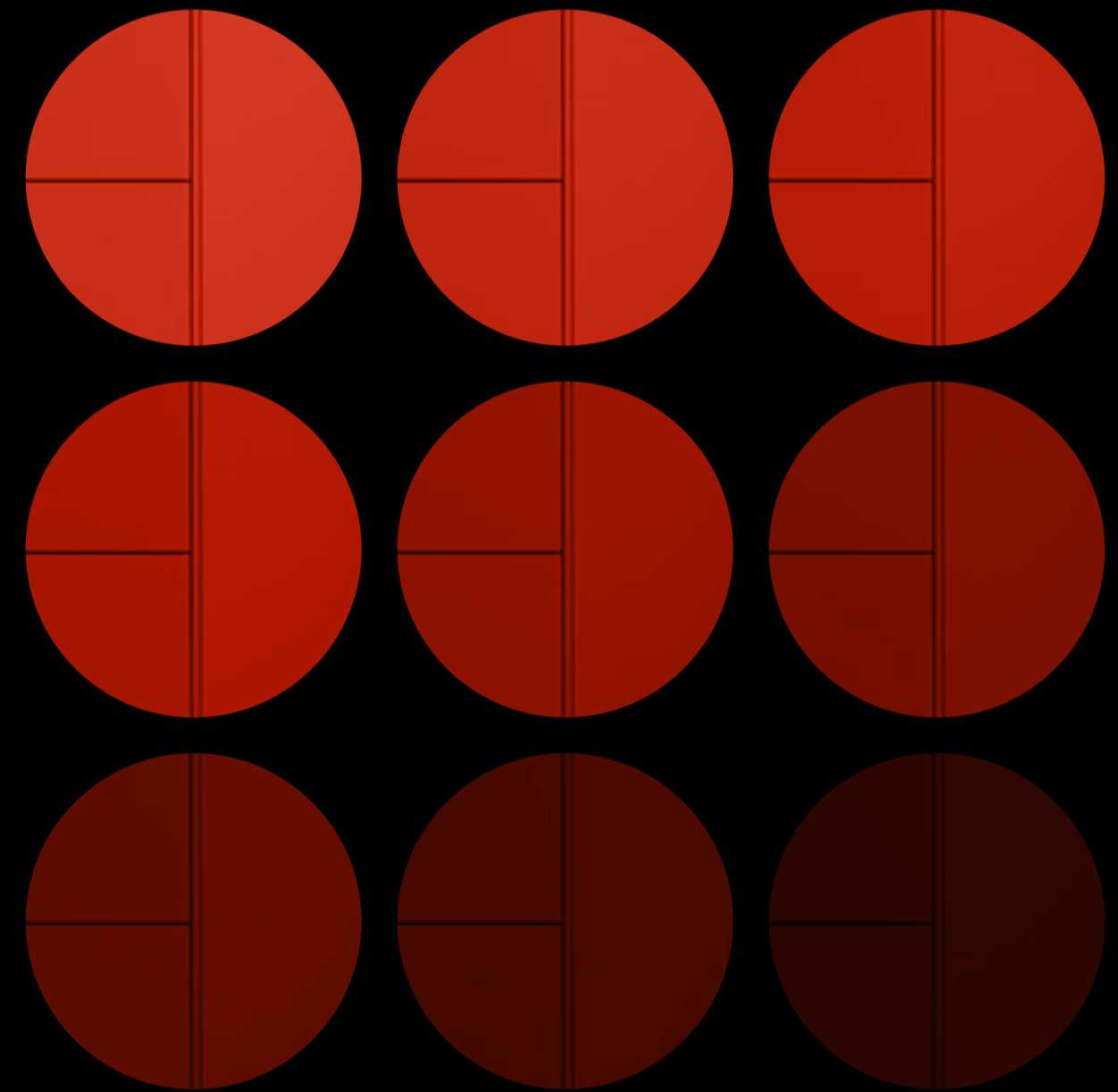
LACQUER

The emotional
energy of colour.

Harnessed in over 2,000 freely available shades.

LACQUER

The almost unlimited range of shades within the SieMatic ColourSystem turns a timeless and elegant colour choice into an optical and haptic voyage of discovery. Lacquers in velvet-matt or high gloss validate compelling colour and texture compositions: as a sensitive reflection of the interior design, or as a conscious juxtaposition.



CERAMIC

The duality of
silkeness and strength,
born from earth and
fire.

SieMatic Ceramic is the perfection achieved when art and nature
are in complete harmony.

CERAMIC



The cool elegance of Ceramic is a fascinating union of seeming opposites: silky-soft gracefulness and rock-hard durability. With a large variety of decors, ranging from classic marbling to an elegant concrete finish, its natural feel is as soft as velvet.

And yet just below the surface lies an impressive strength. Highly developed technology and precise manufacturing lend our Ceramic a straightforward robustness which can easily withstand the challenges of everyday life.

NATURAL STONE



Truly natural stones are a reappraisal of the genuine and the original. Whether classic marble or archaic granite, slate, limestone, quartzite or volcanite - natural stone is an expressive material, full of energy, impressively powerful in its wealth of variations.

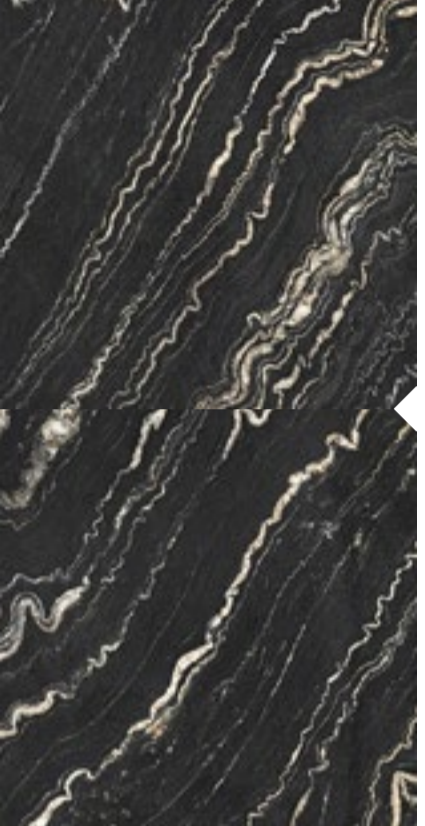
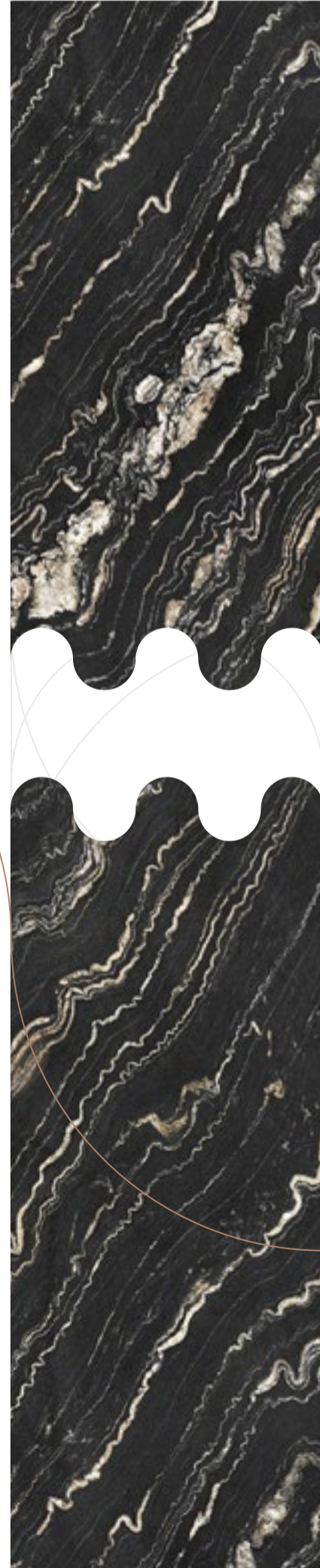
Each natural stone countertop radiates a vitality, while its intrinsic mix of colours and structures makes it unmistakably unique.

NATURAL STONE

The metamorphosis
from millions of years
of geological history to
natural works of art.

Energy tangible to the senses. In natural stones of compelling beauty.

Invisible joints. Visible precision.



VISIBLY INVISIBLE

SieMatic StoneDesign is able to offer exceptional dimensions for natural and composite stones. In a complex and highly precise process, natural stone slabs are connected with a special sinus joint to make them oversized. The working is so accurate that the joint is practically invisible.

This complex process can produce natural or composite stone countertops with a seemingly invisible sinus joint to lengths of over 4 metres or depths of over 2 metres. Also invisible are steel reinforcements integrated in the countertop, both at the edges and at the recesses for sinks and hobs, to ensure a high and evenly spread load bearing capacity.

Slabs of natural stone have a limited size and length. Increased dimensions are not realisable without joints. Seemingly joint-free larger sizes are only possible with our sinus joint.

Our kitchens
are truly
cosmopolitan.

Our virtues
are typically
East-Westphalian.

With our kitchens and interior design concepts, we not only create living spaces for kitchen lovers all over the world; it is also our responsibility to conserve living spaces. For nature and the environment, for the generations to come.

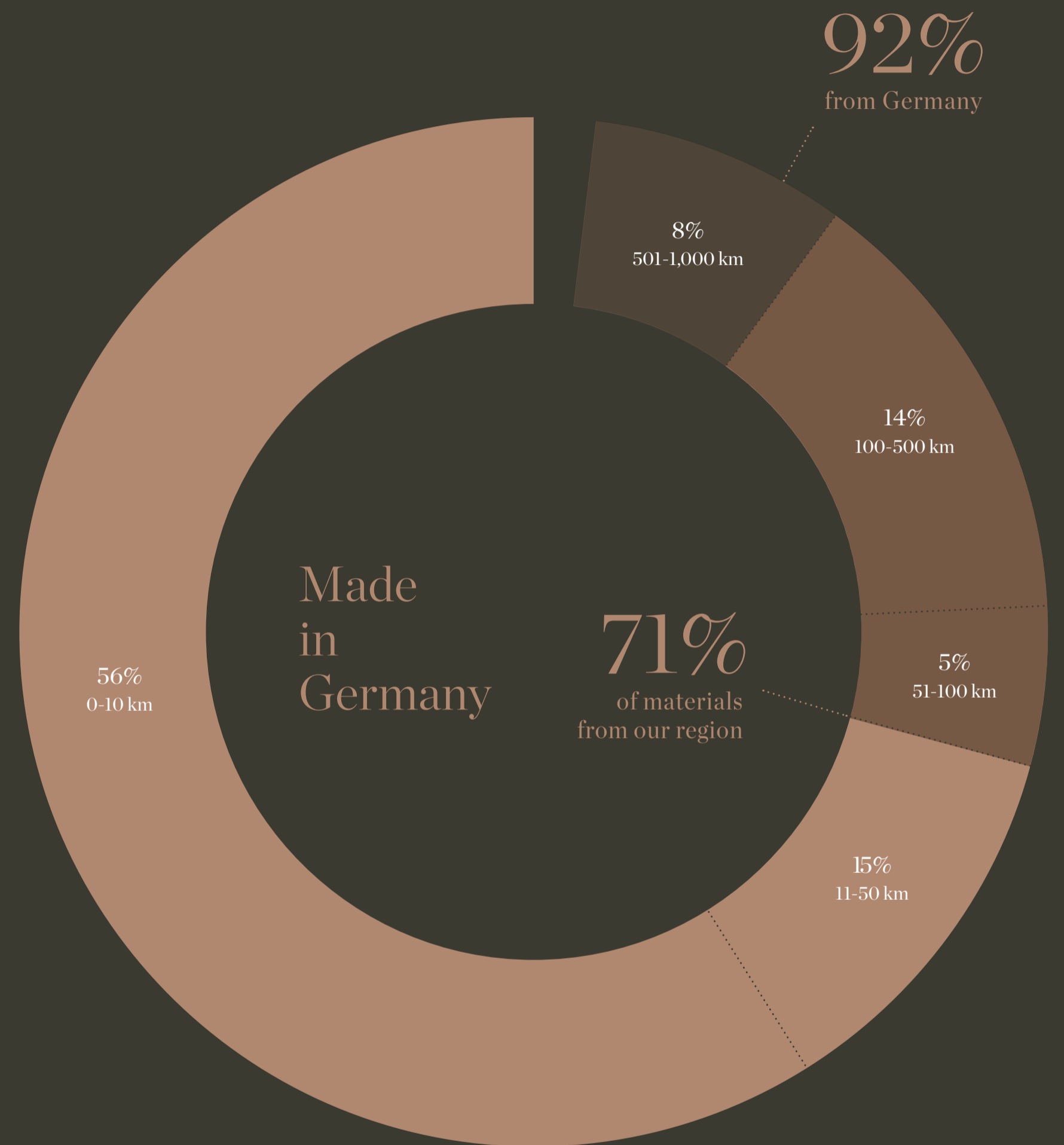
Precisely because we care about the welfare of the next generations, we build kitchens to last, in timeless designs. Precisely because we work with select, natural materials, environmental protection and a careful use of valuable resources are indispensable. And precisely because we believe in top-quality production and the best possible service, we treat the people who work with and for us with respect.

Virtues which are not only typically East-Westphalian, but also and especially typically SieMatic.

For a future worth living.

We have always felt an obligation to the environment and to future generations. Adherence to strict environmental specifications when developing our products, when selecting our materials, and when manufacturing our kitchens, is therefore a given. Our high quality standard is maybe the most significant contribution we can make to sustainability. Every SieMatic kitchen that leaves our factory is designed to last for decades. Starting with the smallest screw, which must pass tough endurance tests in our in-house test laboratory, and ending with the timeless design of our kitchens, intended to delight multiple generations and thus save resources sustainably.

And because our kitchens are popular all around the world, we also make their transport as resource-efficient as possible. This starts with the packaging, which is 100% recycled corrugated cardboard and cut by computer to fit each cabinet size individually, and ends with optimised delivery routes to efficiently maximise capacity and avoid empty runs whenever possible.



71% FROM OUR REGION

The headquarters and production site of SieMatic have been in Löhne, East Westphalia-Lippe, since 1929. This puts it in the excellent company of many other global brands from sectors such as furniture, mechanical engineering, foodstuffs, health, media and information technology.

The benefit is that many specialists and excellent suppliers are located in the direct vicinity. In 2022 alone, more than 70% of materials were purchased from partners within a radius of 50 km.

92% FROM GERMANY

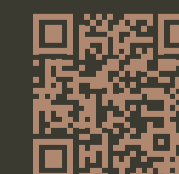
One of the many reasons why SieMatic kitchens are so popular all over the world is undoubtedly the quality associated with "Made in Germany".

For 95 years, we have been producing our kitchens in Germany, and even today more than 90% of our materials and parts are produced, refined or finalised in Germany.

100% SOLIDARITY

We profit as a company from committed individuals and highly qualified partners within our region, and we would also like to give something back. Conducting business in a manner which is both future-proof and responsible is our greatest concern.

With 340 employees, we are not only a significant employer for Löhne and the surrounding area. We also wish to make a tangible contribution with our social commitment.



More at siematic.com/sustainability

Excellent ideas. Global competence.

As early as the product development phase, we include practically limitless options for our furniture, living concepts, materials and colours in order to ensure the high degree of individualisation which makes each SieMatic kitchen unique. But our kitchens only acquire their true character when they become part of their later home.

This is why consultation, planning and assembly are so important, and why we only entrust them to the experts: our global SieMatic partners. Highly qualified specialists whose award-winning ideas and proven competence in design and realisation lead to impressive kitchen concepts worldwide. From inspiration to installation, they provide bespoke solutions to satisfy the needs and wishes of their customers. Ultimately giving them what kitchen lovers all over the world have always wished for: their own unique dream kitchen.

Get closer to your dream kitchen with one of our global partners:
www.siematic.com/dealer



More at
siematic.com/dealer

SieMatic

© 2024 SieMatic Möbelwerke GmbH & Co. KG

All rights reserved. Articles may only be used for publication with the written permission of SieMatic Möbelwerke GmbH & Co. KG and with precise stating of sources. We reserve the right to make technical changes to our products. Colour deviations during the printing process may occur.

Concept and design: Less Rain
lessrain.com



SieMatic

95 Years of
Kitchen Interior Design
1929 - 2024

siematic.com