

Nicholas Anthony.

INTERIORS SINCE 1963

THE INTERNATIONAL PROPERTY AWARDS | BATHROOM DESIGN: F11 | LEXDEN BATHROOM BY NICHOLAS ANTHONY



THE INTERNATIONAL PROPERTY AWARDS | KITCHEN DESIGN: F11 | LEXDEN BATHROOM BY NICHOLAS ANTHONY

A: OVERVIEW

B1: BRIEF

B1: CONCEPT 1

B1: CONCEPT 2

B2: FLOOR PLANS

C1: CHOSEN DESIGN

C2: IMPORTANT ELEMENTS

C3: MATERIALS & SWATCHES

C4: INNOVATIONS

C5: TESTIMONIAL

Nicholas Anthony.

INTERIORS SINCE 1963

A: OVERVIEW

Where nature seamlessly intertwines with
cutting-edge design.





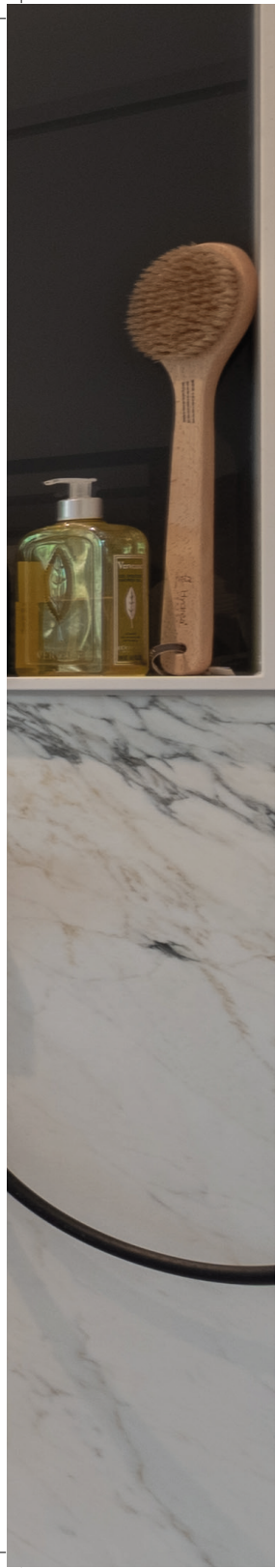
Nestled on a serene private drive in Lexden, near Colchester's historic heart, stands a contemporary residence where nature seamlessly intertwines with cutting-edge design.

The culmination of a meticulous refurbishment journey, the bathrooms within this home epitomise a harmonious blend of organic allure and avant-garde craftsmanship.





A: OVERVIEW



Nicholas Anthony.

INTERIORS SINCE 1963

B1: BRIEF & CONCEPTS

Commissioned by homeowners with a profound connection to nature,
this project aimed to create two distinct yet harmonious bathroom
sanctuaries within a new extension



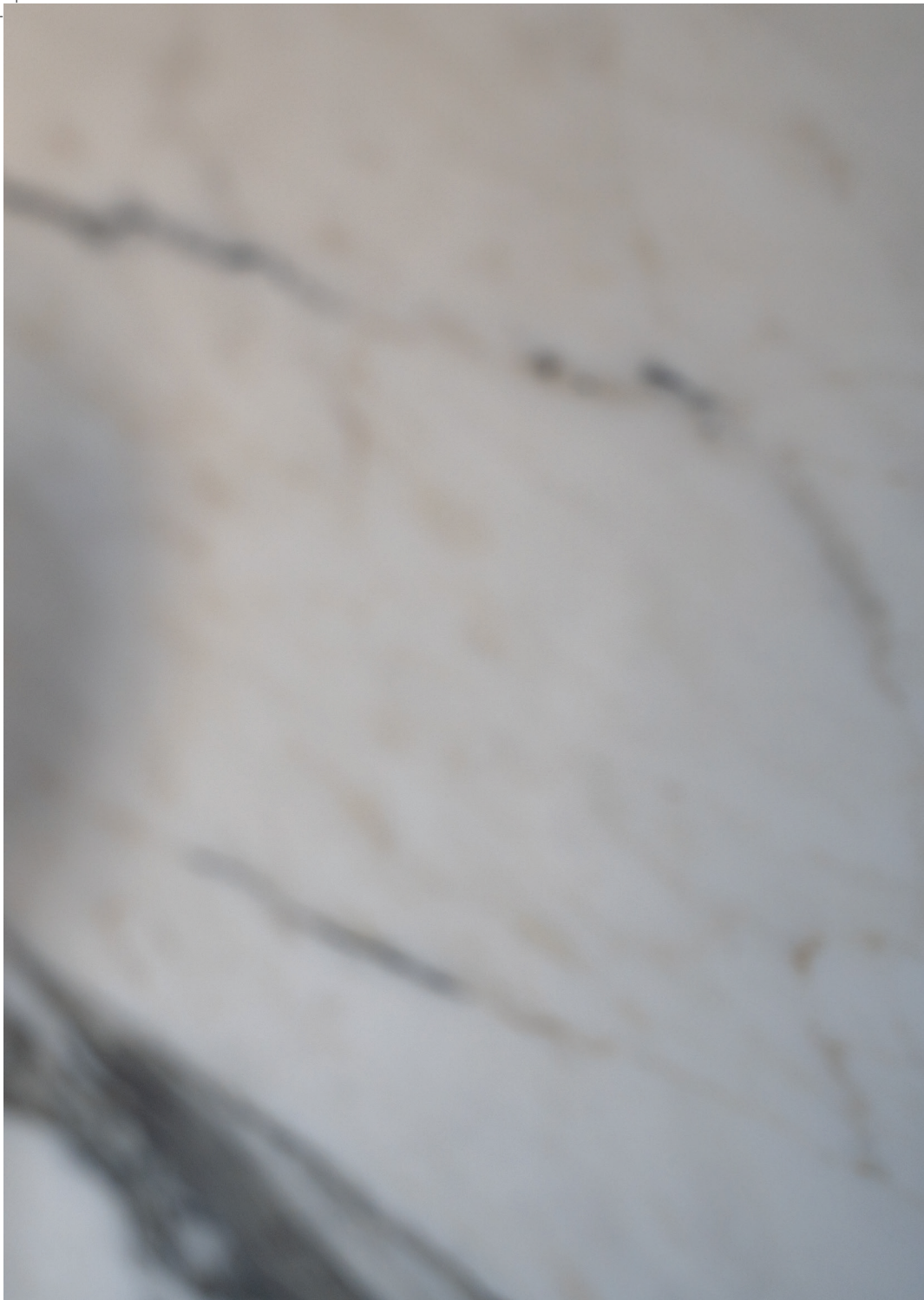




Each space, tailored specifically for the husband and wife, mirrors the other in design ethos while diverging in orientation.

The design incorporates robust materials like book-matched marble, black brassware, and bespoke fixtures such as a walk-in shower, wall-hung toilet, and towel radiator.





TOWEL RADIATOR



B1: BRIEF



Glass fronted cabinetry and unique lighting solutions enhance the overall experience, reflecting the homeowners' commitment to quality and personalisation.



B1: BRIEF

HIS

The wife's bathroom, oriented Eastward features a large Georgian style window to capture morning light, picking out the softer textures. While the husband's West-facing sanctuary allows the robust materials and masculine touches to darken down creating a moodier ambiance.

HERS



Initially, the first bathroom was designed with an even wider version of the single large basin with twin taps, a suggestion made in lieu of two separate basins.







B1: BRIEF

The second bathroom's design only commenced after the client reviewed the initial presentation of the main room, ensuring both spaces met the specific needs and desires of their respective occupants.





BATHROOM ONE: HERS



BATHROOM TWO: HIS

Nicholas Anthony.

INTERIORS SINCE 1963

B1: CONCEPT 1

BATHROOM ONE: HERS - CONCEPT

B1: CONCEPT 1





B1: CONCEPT 1

BATHROOM ONE: HERS - CONCEPT

BATHROOM TWO: HIS - CONCEPT

B1: CONCEPT 1





B1: CONCEPT 1

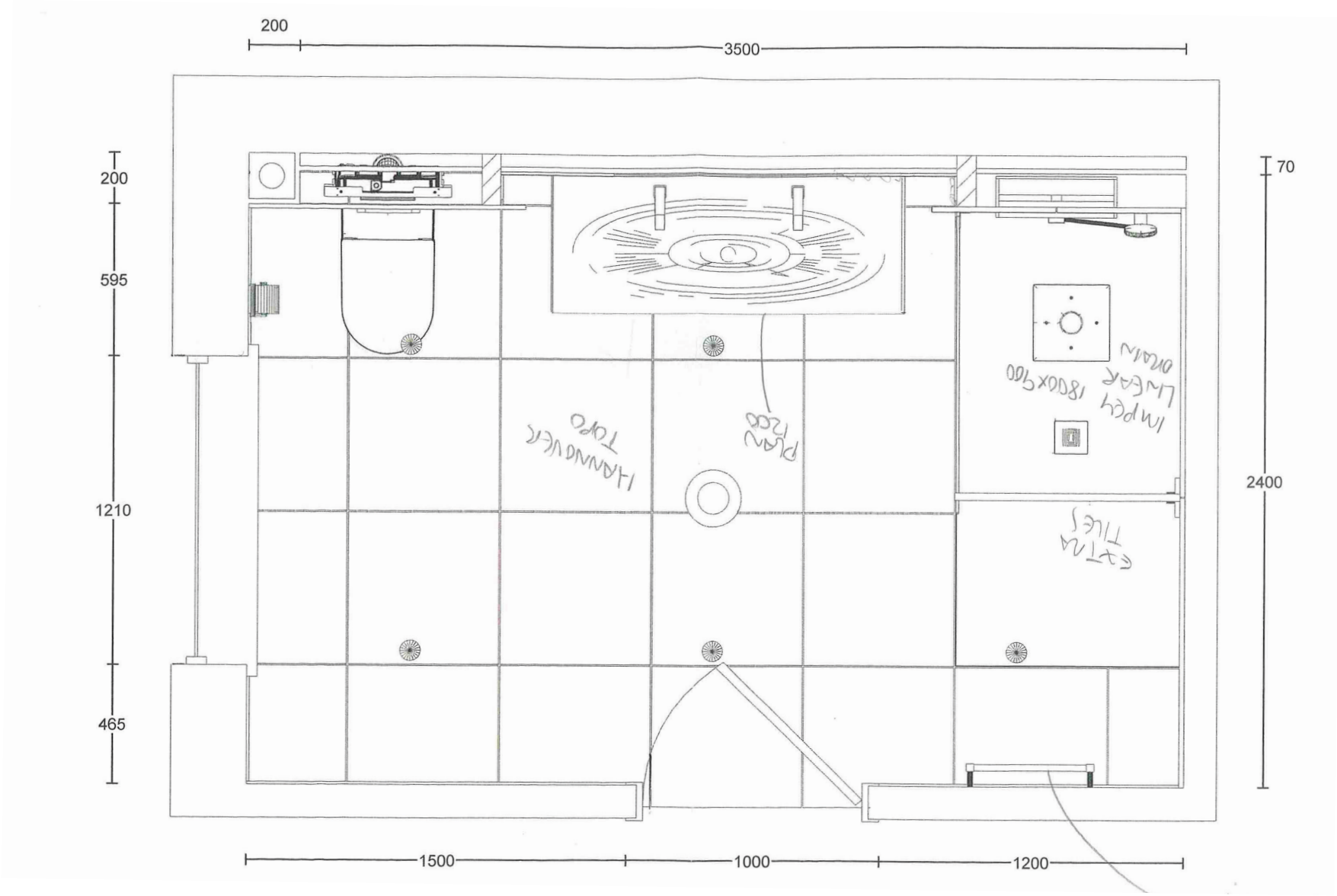
BATHROOM TWO: HIS - CONCEPT

Nicholas Anthony.

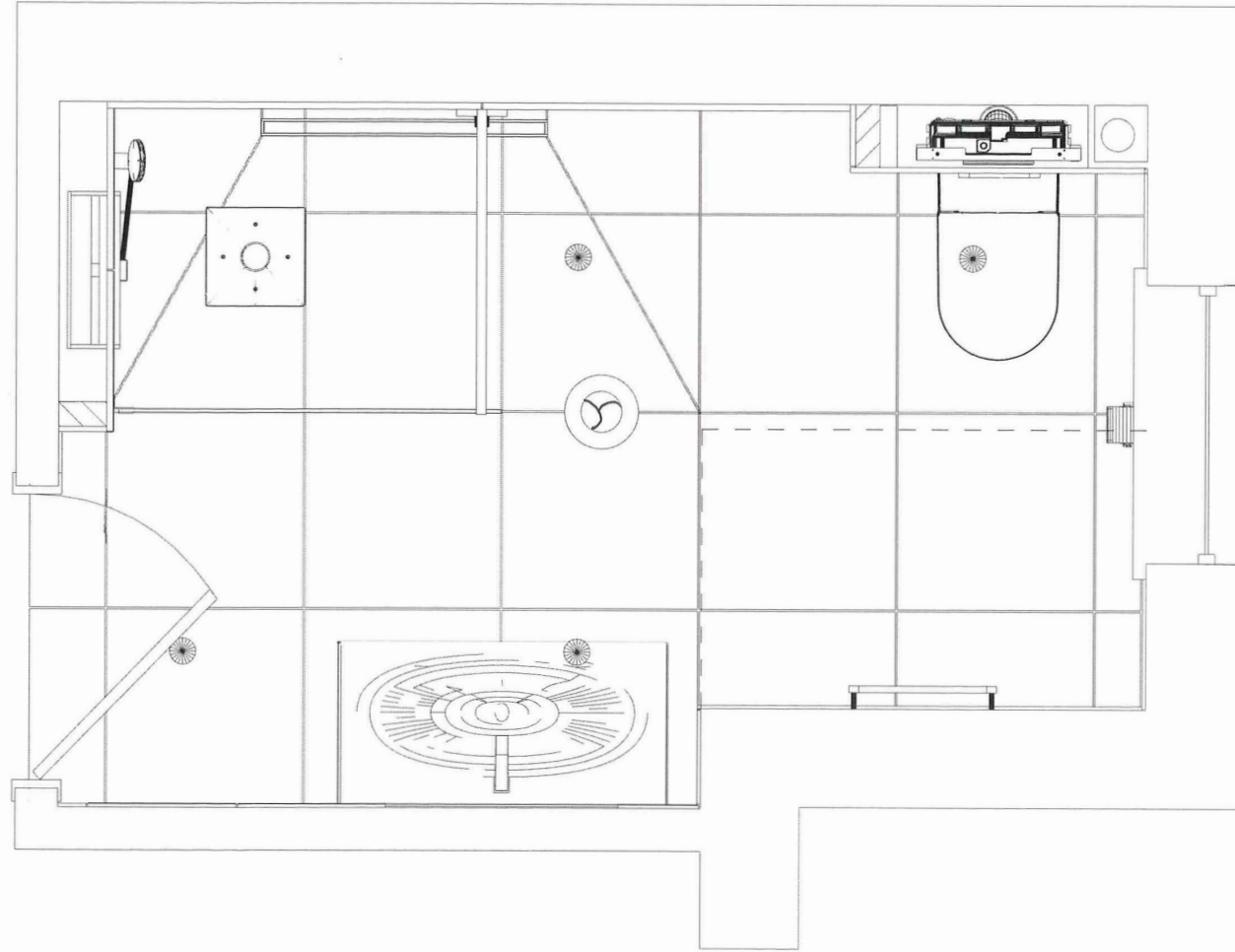
INTERIORS SINCE 1963

B2: FLOOR PLANS

BATHROOM ONE: HERS - FLOOR PLAN



BATHROOM TWO: HIS - FLOOR PLAN



Nicholas Anthony.

INTERIORS SINCE 1963

B3: BUDGET



B3: BUDGET



£25,000 per room, including templating and marble installation.

50% on floor and wall coverings:

- Marble
- Mirrors
- Glass splashback
- Corian surround
- Tiles and trims

5% on the toilet

13% on the basin, furniture, and taps

20% on the shower, tray, and screen

7% on the radiator, electric underfloor heating and feature lighting

Nicholas Anthony.

INTERIORS SINCE 1963

C1: CHOSEN CONCEPT



C1: CHOSEN DESIGN

The client had a clear vision for their home, and we crafted a singular concept and design that was approved for installation. During the design evolution, adjustments were made to refine the project further: the width of the basin and the height of the towel radiator were shortened, and the flush fitting shower tray was replaced with a tiled tray after the client saw one of our displays, which better suited their aesthetic preferences.



When it came time to reserve the marble, the initially illustrated consecutive slabs were unavailable, which is critical for book matching.

Serendipitously, a new block of Calacatta Corchia had arrived, which was even more striking. We facilitated a viewing for the client of this exceptional material, along with other available options, and they were delighted to follow our recommendation.





This design exemplifies the seamless blend of aesthetic beauty and practical functionality, showcasing the striking Calacatta Corchia marble as a central element. The meticulous attention to detail and adaptability throughout the project resulted in a space that is both breathtaking and perfectly aligned with the client's vision



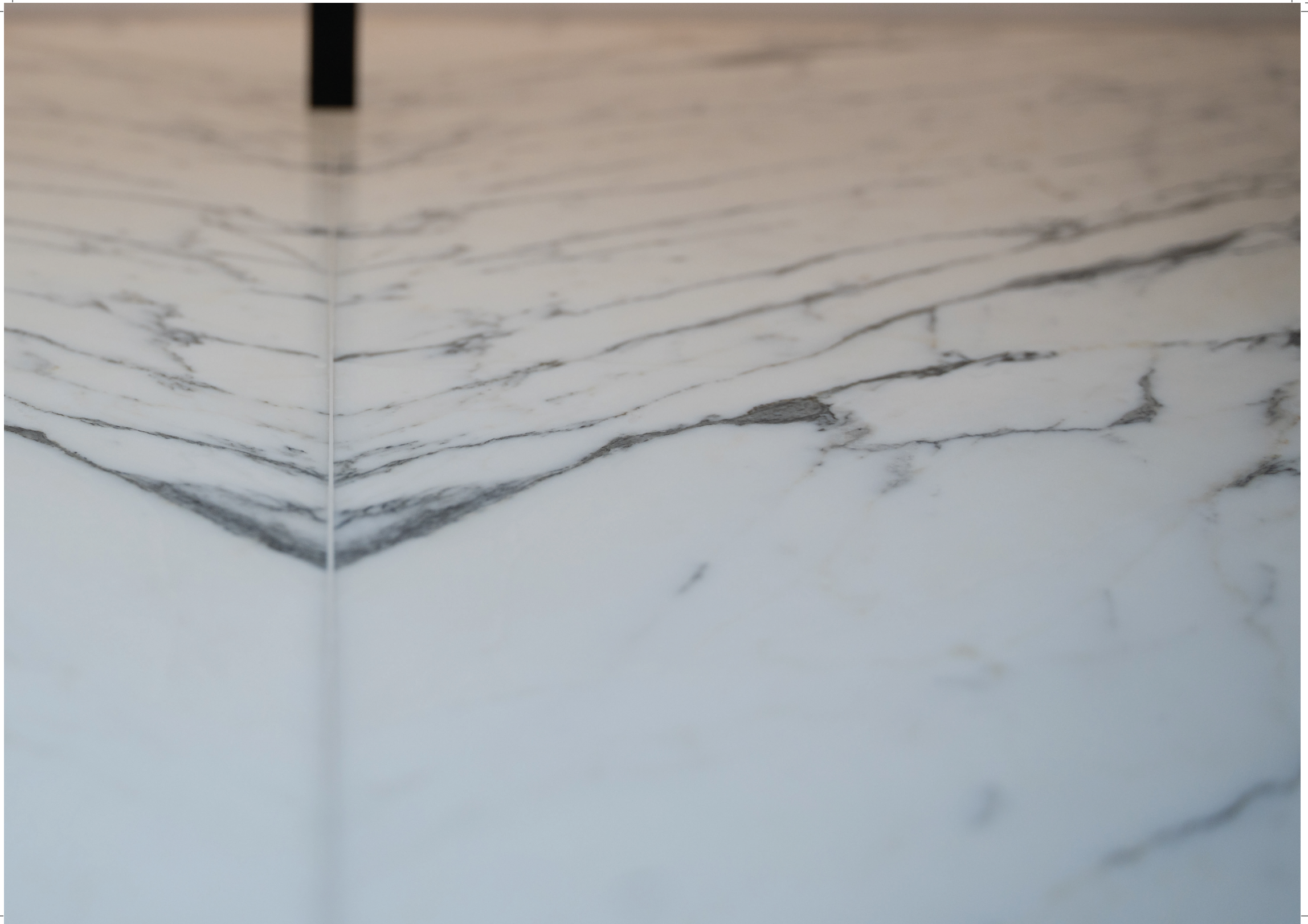
Nicholas Anthony.

INTERIORS SINCE 1963

C2: IMPORTANT ELEMENTS

The hallmark of this design lies in its transformative use of marble, transcending its role as a mere finish to become a veritable artwork within the space. Impeccable joinery and a seamless integration of organic and modern elements define the bathrooms, exuding both luxury and functionality.







Ribbed motifs and strategic placement of mirrors enhance the interplay of light and texture, creating a captivating ambiance that elevates everyday rituals to moments of indulgence.



Nicholas Anthony.

INTERIORS SINCE 1963

C3: MATERIALS & SWATCHES



LEXINGTON MAPLE CERAMIC TILES

HANNOVER TOPO STONE EFFECT



CALACATTA CORCHIA MARBLE



ANTHRACITE BACK-PAINTED GLASS



BLACK BRASSWARE

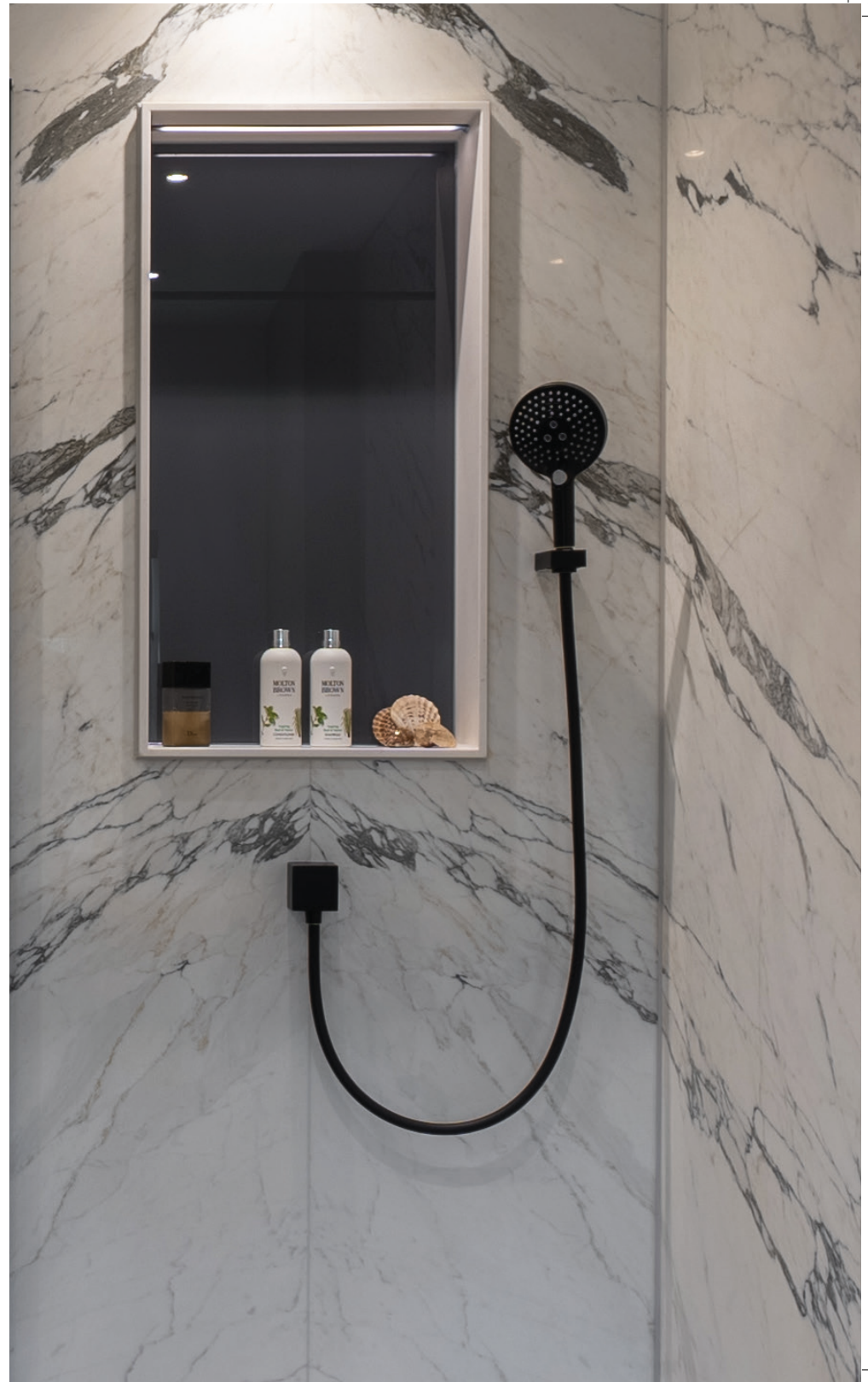
Nicholas Anthony.

INTERIORS SINCE 1963

C4: INNOVATIONS



C4: INNOVATIONS





Craftsmanship shines through in every detail, from the precise alignment of marble veins to the artful concealment of functional elements.

Innovative use of materials such as matt black tile trims, anthracite grey units, and concrete-effect wall panels imbue the spaces with contemporary flair while maintaining a harmonious balance. Specialist design skills orchestrate a seamless flow between elements, ensuring a cohesive and visually striking outcome.





CONCEPT



COMPLETED DESIGN

Nicholas Anthony.

INTERIORS SINCE 1963

C5: TESTIMONIAL



C5: TESTIMONIAL

“Our biggest wish was to achieve an impressive book-matched marble feature, so the natural marble was always going to be the standout element. The way the offcuts were considered and utilized to bring the veining around the corner was very clever. The veining now continues throughout the shower alcove, creating an outstanding impact and ensuring very efficient use of the material to deliver an incredible feature that is practically identical in both bathrooms. We also love the use of different depths and diverse textures, combined with the innovative use of lighting and mirrors, which have created a design that is both interesting to the eye and still minimalist and highly practical.”

client testimonial

Completed with utmost dedication and attention to detail, these bathrooms stand as a testament to a lifelong commitment to quality and refinement. The integration of natural elements with modern sensibilities not only fulfills the homeowners' vision but surpasses expectations, setting a new standard for sophisticated residential design.

The bathrooms of this Lexden residence embody the pinnacle of design excellence, where nature's timeless beauty converges with innovative craftsmanship to create spaces that are as functional as they are awe-inspiring.

Nicholas Anthony.
INTERIORS SINCE 1963



THE INTERNATIONAL PROPERTY AWARDS | KITCHEN DESIGN: F11 | LEXDEN BATHROOM BY NICHOLAS ANTHONY

www.nicholas-anthony.co.uk