

*Nicholas Anthony.*  
INTERIORS SINCE 1963

---

A: OVERVIEW

---

B1: BRIEF

---

B1: CONCEPT 1

---

B1: CONCEPT 2

---

B2: FLOOR PLANS

---

C1: CHOSEN DESIGN

---

C2: IMPORTANT ELEMENTS

---

C3: MATERIALS & SWATCHES

---

C4: INNOVATIONS

---

C5: TESTIMONIAL





Each kitchen project offers a chance for  
*creativity to thrive.*



This was exemplified in a recent project where Nicholas Anthony transformed an underutilised kitchen into a dream space that seamlessly blended heritage style and modern elegance, perfectly encapsulating the unique taste and lifestyle of the family.

The initial blank canvas allowed for innovation, resulting in a kitchen that stands at the heart of the home.





A: OVERVIEW





Nicholas Anthony were appointed to create a luxurious, modern kitchen that harmonises with the recently renovated home in Oxshott, while catering to the practical needs and aesthetic preferences of the homeowners.







The design should integrate seamlessly with the adjacent family and formal rooms, ensuring a cohesive and elegant flow throughout the living spaces.

After visiting the SieMatic showroom last year, the homeowners were impressed with the ribbed custom bar cabinet and expressed interest in incorporating similar elements into their kitchen design. They sought a super-luxe yet neutral aesthetic, balancing modern and classic influences to reflect their tastes - modern for her, art and antiques for him.



CUSTOM RIBBED ISLAND



BALANCING MODERN & CLASSIC



The kitchen should feature a generous island with seating for 6-8, serving as the main dining area. Full-height cabinets to extend to the ceiling for maximized storage, with luxurious metal finishes incorporated. Countertops and backsplashes to include book-matched marble, on the island and on the feature wall.

Two distinct sink areas with substantial basins to include a Quooker tap and an Insinkerator food disposal unit.



Storage solutions to ensure ample space for pots, pans, and a stand mixer, with thoughtful organization throughout the cabinetry.



Appliances to include two dishwashers, one large built-in fridge, a smaller freezer, a drinks fridge, and a separate glass-front wine fridge.





At least three ovens to be installed, possibly a double oven and an additional wall oven with one at least exceeding the standard 600mm width



The island to feature bespoke luxury finishes, seamlessly blending practicality with style. The flooring to be pale limestone, mirroring the elegance of the entry hall and creating a cohesive flow throughout the space.



COMPLEMENTARY CABINETRY



PALE LIMESTONE FLOORING



The colour palette to blend with the navy and silver tones of the family room and the black, ivory, and green scheme of the formal dining/lounge areas.







## B1: CONCEPT 1

To answer the client's brief, Nicholas Anthony developed two distinct design concepts. The first concept featured an extractor hood and a hob positioned prominently on the main focal back wall, with integrated ovens seamlessly incorporated into the surrounding cabinetry. This arrangement not only created a striking visual impact but also optimised the kitchen's workflow, placing the cooking zone at the heart of the space while ensuring the ovens are easily accessible. The seamless cabinetry, in the same shade as the walls, enhanced the luxurious and cohesive aesthetic, contributing to a serene environment that balanced modern and classic elements as per the homeowners' preferences.



B1: CONCEPT 1







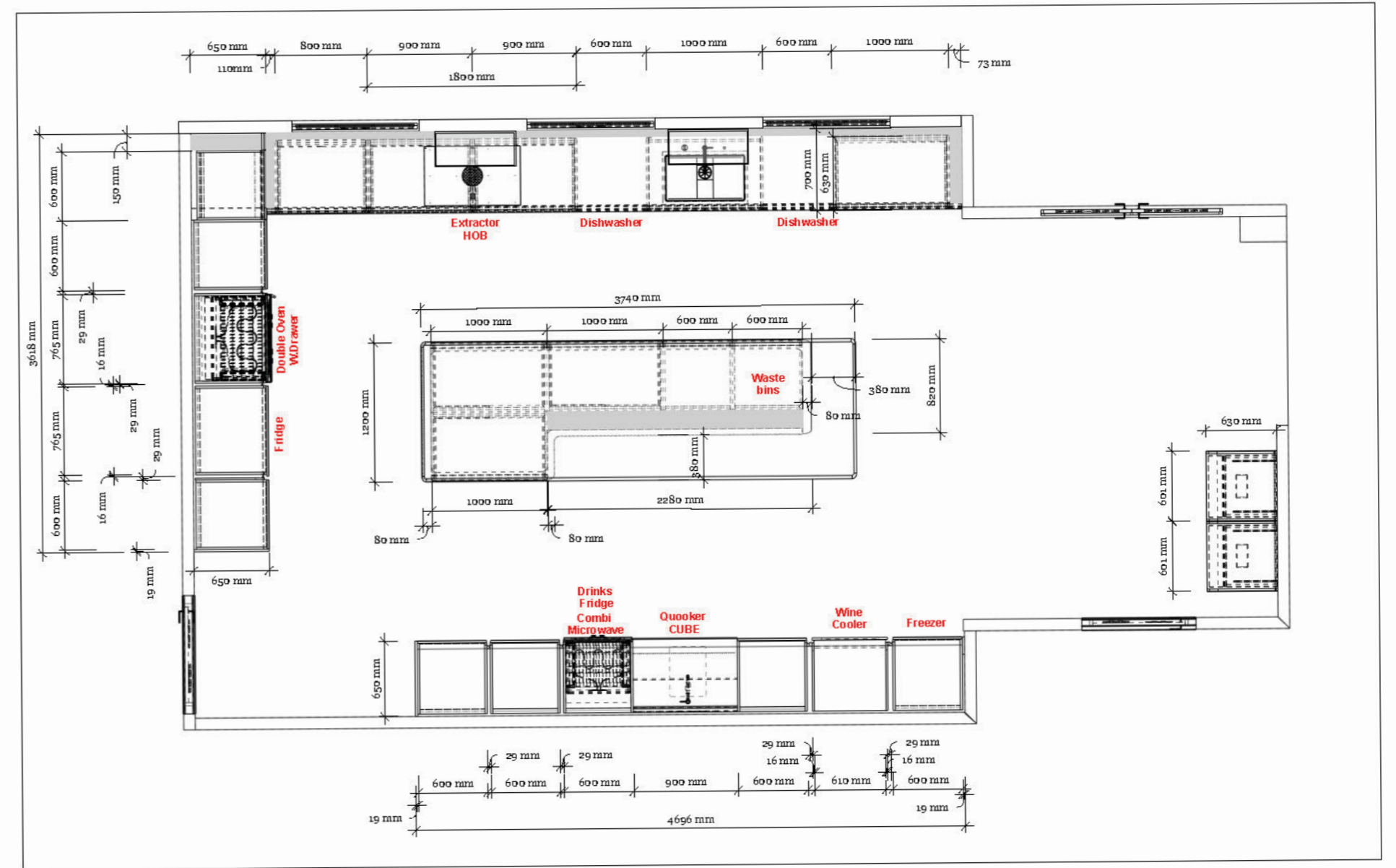
**B1: CONCEPT 2**

The second concept shifted the integrated ovens to the main focal back wall, making them the centerpiece of the design, while the extractor hob was showcased on the right-hand side. This layout highlighted the modern appliances and created a dynamic and functional cooking area, emphasising the kitchen's role as a central gathering place. Both concepts featured full-height cabinets, book-matched marble elements, and a generous island with seating, ensuring ample storage and a luxurious, cohesive look. These innovative designs addressed the homeowners' needs for practicality, luxury, and aesthetic harmony, successfully blending modern functionality with a timeless, elegant appeal.





KITCHEN FLOOR PLAN







FURNITURE: £96,480

APPLIANCES: £31,188

WORKTOPS: £19,632

SINKS & TAPS: £2,700





At the heart of this project was the desire to create a kitchen that exuded tranquillity and luxury, combining traditional elements with contemporary elegance. The client's appreciation for heritage style and antique objets d'art guided Nicholas Anthony's design approach.





CI: CHOSEN DESIGN

The result is a space that is both functional and visually stunning, incorporating key focal points like original 1930s teal and copper vases, Art Deco sculptures, and Tamara de Lempicka prints. The inclusion of original 1930s ornaments, sculptures, and Art Deco prints seamlessly integrates with modern elements, creating a unique aesthetic that honours the past while embracing the present.





C1: CHOSEN DESIGN

The overall design aims to be a place where family and friends gather, relax, and feel nurtured. The chosen design concept, places integrated ovens as the centerpiece on the main focal back wall, with an extractor hob showcased on the right-hand side. This layout not only highlights the modern appliances but also creates a dynamic and functional cooking area, emphasising the kitchen's role as a central gathering place.



The concept features full-height cabinets, book-matched marble elements, and a generous island with seating, ensuring ample storage and a luxurious, cohesive look.



CT: CHOSEN DESIGN

Additionally, the client requested an integrated breakfast bar, which serves as a focal point for both practicality and style. Custom-made finishes throughout the kitchen infuse the space with a sense of luxury and refinement, successfully blending modern functionality with timeless elegance and addressing the homeowners' needs for aesthetic harmony.







Subtle yet impactful Art Deco themes are present throughout the design, from the detailed edge of the island's stone to the sculptural pendant Occhio lights.

Every detail of the island, from its dimensions to the placement of drawers, was meticulously planned to ensure ease of use and maximum functionality. Wrapped in fluted walnut and crowned with Bianca Eclipsia quartzite, serves as the kitchen's centerpiece, offering both practicality and a striking visual appeal. Even the detail on the edge of the island's stone is unique, being both sensuous and a statement, honouring the Art Deco theme with subtlety and finesse. The integrated breakfast bar encourages informal gatherings, making the kitchen a social hub where the family can work, talk, and entertain.

The lighting system is designed to shift from full illumination to a sultry ambiance, catering to different moods and activities. This dynamic lighting enhances the space's versatility and elegance.

Natural materials give the space a grounded sense of depth and calm, and the natural limestone flooring adds warmth and texture, contributing to the room's intended atmosphere. The light sterling grey walls, seamless cabinetry (intentionally matching the walls for a cohesive look), and natural materials like limestone flooring and quartzite countertops create a serene and luxurious atmosphere.

Polished nickel and glass shelves above the sink not only provide a dedicated space for displaying collectibles but also enhances the room's stylish and aesthetic connection with the rest of the house.

Utilising SieMatic's highly engineered cabinetry, Nicholas Anthony provided optimised storage solutions that blended form and function, maintaining a clutter-free and serene space.

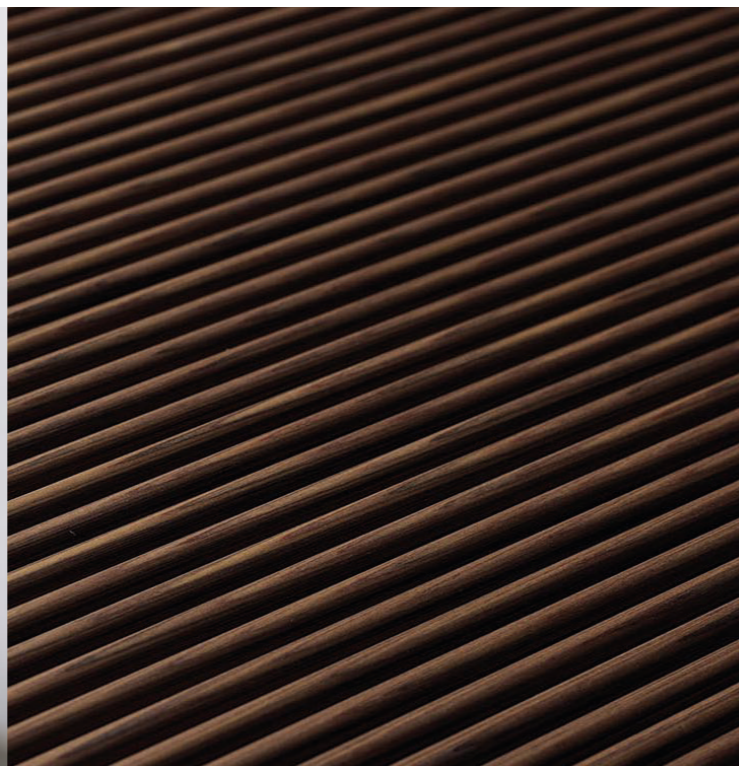








SLX HANDLE



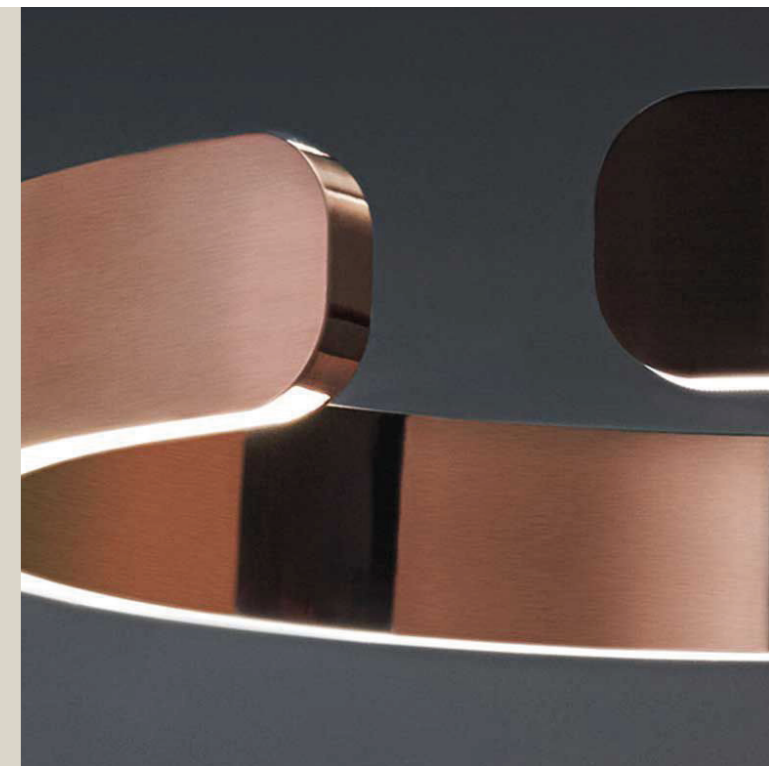
WALNUT FLUTED



BIANCA ECCLIPSIA



STERLING GREY



OCCHIO ROSE GOLD





C4: INNOVATIONS



This project required the expertise of specialists and artisans to achieve the desired outcome. The meticulous joinery work, innovative use of materials, and thoughtful integration of design elements resulted in a flawless finish.

The unique edge detail on the island's stone and the floating cabinetry illusion demonstrates Nicholas Anthony's commitment to craftsmanship.







*"I am really loving the new kitchen and the Bora grill pan is great to work with! The way everything is planned/organized has worked out really well. It is such a pleasure to cook and entertain in this amazing space. I often have extra guests, and its so easy to cook, serve and be social with this layout. I actually find myself working on my laptop in the kitchen all the time as well, I even have a "desk drawer!" It's definitely the most used room in the house."*

**client testimonial**

The completed kitchen project is a testament to the power of design ingenuity and collaboration. By embracing the challenge of a blank canvas, Nicholas Anthony created a space that is not only functional and luxurious but also deeply personal and inviting. The kitchen now stands as a destination where family and friends gather, reflecting the family's unique style and serving as an inspiration for the rest of the house. The harmonious blend of heritage charm and modern sophistication, combined with innovative design solutions, has truly transformed this space into an exceptional living environment.



THE INTERNATIONAL PROPERTY AWARDS | KITCHEN DESIGN: F10 | OXSHOTT KITCHEN BY NICHOLAS ANTHONY

[www.nicholas-anthony.co.uk](http://www.nicholas-anthony.co.uk)